

BOA-SKI



**LA GUADELOUPE,
CTÉ FRONTENAC, P.Q.**

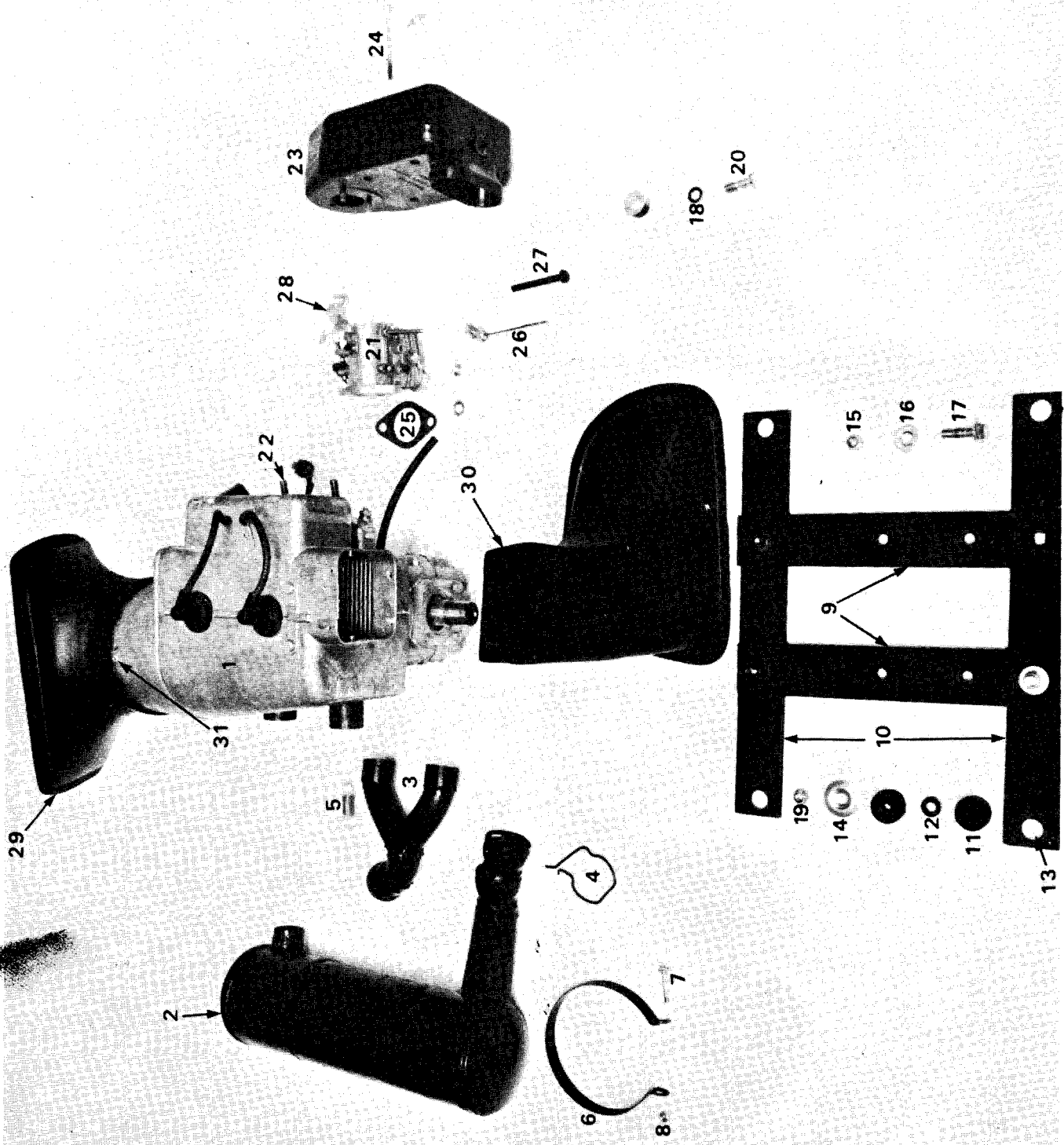
1974

**DESCRIPTION
ET
LISTE DE PIÈCES**

**DESCRIPTION
AND
PARTS LIST.**

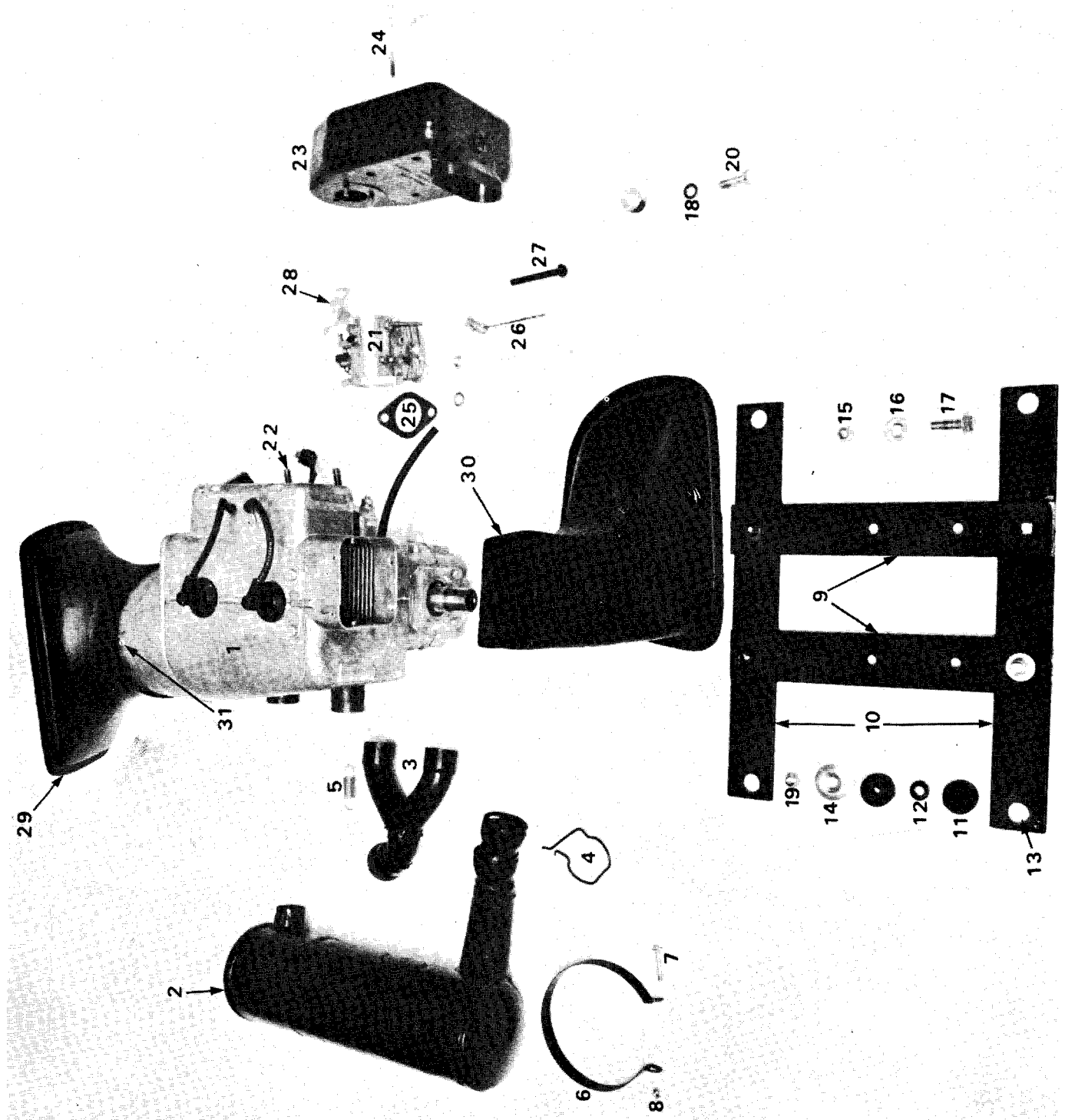
1979

No illustration	BOA-SKI	CABINE	CAB	DESCRIPTION	MK 230	MK I 292T	MK I 295	MK II 292T	MK II 340T	MK II 440T	S/S 340T	S/S 440T
1	S-13-03-067	Garniture pare-brise	Windshield trimming		1							
2	S-13-03-063	Pare-brise	Windshield		1							
-	S-73-04-004	Pare-brise	Windshield			1	1					
3	S-00-12-011	Rondelle	Washer		8	9	9					
4	S-00-07-006	Vis	Screw		8	9	9					
5	S-73-04-059	Cabine	Cab		1							
-	S-73-04-060	Cabine	Cab			1	1					
6	S-73-03-078	Garniture de cabine arriere	Cab rear trimming		1							
-	S-73-04-079	Garniture de cabine arriere	Cab rear trimming			1	1					
	S-13-03-092	Crochet d'attache cabine	Hook hood clamp		2	2	2					
7	S-13-03-093	Attache cabine	Hood clamp		2	2	2					
	S-00-02-004	Rivet attache cabine	Rivet		4	4	4					
8	S-13-03-112	Support de penture	Support strap hinge		2	2	2					
9	S-00-12-016	Rondelle	Washer		2	2	2					
10	S-00-03-002	Ecrou 5/16" - 24	Nut 5/16" - 24		2	2	2					
11	S-00-03-011	Ecrou d'ancrage	Molly jack nut		4	4	4					
12	S-00-07-001	Boulon	Bolt		4	4	4					
13	S-00-13-086	Contour de lampe	Rim headlamp		1	1	1					
14	S-00-13-087	Boulon d'ajustement	Bolt		2	2	2					
15	S-00-13-088	Ressort d'ajustement	Spring adjust		2	2	2					
16	S-00-13-085	Vis d'ajustement	Screw adjust		1	1	1					
17	S-00-06-006	Goupille	Cutter pin		1	1	1					
18	S-00-13-089	Ecrou d'ajustement	Nut adjust		2	2	2					
19	S-00-13-090	Ecrou	Nut (speed)		1	1	1					
20	S-00-12-005	Rondelle	Washer		4	4	4					
21	S-00-19-068	Serre cable	Clamp		1	1	1					
22	S-00-12-016	Rondelle	Washer		1	1	1					
23	S-00-13-080	Ampoule 45W	Bulb 45W		1							
-	S-00-13-081	Ampoule 60W	Bulb 60W			1	1					
24	S-00-13-098	"Holder socket"	Socket		1	1	1					
25	S-00-13-084	Phare	Headlamp		1	1	1					
26	S-00-12-019	Joint d'etanchéité	Rubber seal		1	1	1					
	S-13-03-099	Penture ass. droit	Hinge ass'y right		1	1	1					
	S-13-03-100	Penture ass. gauche	Hinge ass'y left		1	1	1					
27	S-13-03-160	Partie sup. droit	Upper strap-hinge R.H.		1	1	1					
-	S-13-03-110	Partie sup. gauche	Upper strap-hinge L.H.		1	1	1					
28	S-13-03-109	Barre d'articulation	Side member		2	2	2					
29	S-13-03-104	Partie inf. droit	Lower support R.H.		1	1	1					
-	S-13-03-105	Partie inf. gauche	Lower support L.H.		1	1	1					
30	S-00-01-075	Boulon 1/4" - 20 x 1 1/2"	Bolt 1/4" - 20 x 1 1/2"		4	4	4					
31	S-00-03-007	Ecrou 1/4" - 20	Nut 1/4" - 20		4	4	4					
32	S-00-01-017	Boulon 1/4" - 20 x 2"	Bolt 1/4" - 20 x 2"		2	2	2					
33	S-00-03-007	Ecrou 1/4" - 20	Nut 1/4" - 20		2	2	2					
34	S-00-01-018	Boulon S/H 1/4" - 20 x 1/2"	Bolt 1/4" - 20 x 1/2"		2	2	2					
35	S-00-01-010	Boulon 1/4" - 28 x 1/2"	Bolt 1/4" - 28 x 1/2"		2	2	2					
36	S-00-12-016	Rondelle	Washer		4	4	4					
37	S-10-03-033	Reteneur de réservoir à essence	Gas tank brace		2	2	2					
	S-73-04-021	Décalque BOA-SKI	BOA-SKI decal		2							
	S-73-04-022	Identification "Mark"	"Mark"		2							
	S-73-04-023	Identification "230"	"230"		2							
	S-73-04-024	Identification "Mark I"	"Mark I"			2	2					
	S-73-04-025	Identification "295"	"295"			2						
	S-73-04-026	Identification "292"	"292"			2						
38	S-73-04-027	Décalque cabine gauche	Cab side stripe L.H.		1							
39	S-73-04-028	Décalque cabine droit	Cab side stripe R.H.		1							
40	S-73-04-031	Décalque cabine avant	Cab front stripe			1	1					



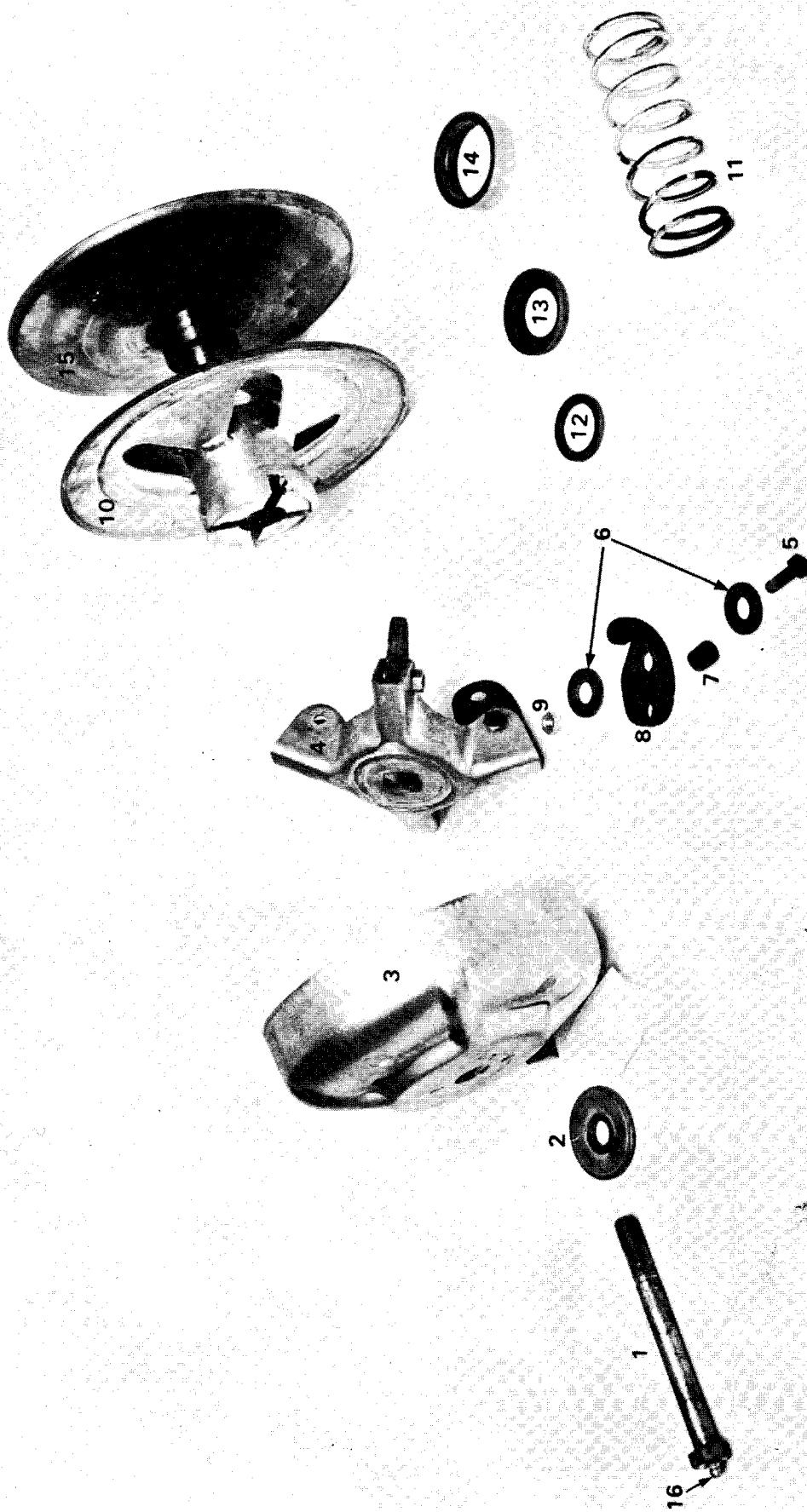
1974

No illustration	BOA-SKI	MOTEUR	ENGINE	MK 230	MK I 292T	MK I 295	MK II 292T	MK II 340T	MK II 440T	S/S 340T	S/S 440T
		DESCRIPTION									
1	S-00-92-001	Moteur J.L.O.	Engine	1							
-	S-00-92-002	Moteur J.L.O.	Engine								
-	S-00-95-001	Moteur Kohler 292 twin	Engine		1		1				
-	S-00-95-002	Moteur Kohler 340 AX	Engine					1			
-	S-00-95-003	Moteur Kohler 440 AX	Engine						1		
-	S-00-95-004	Moteur Kohler 340 AS	Engine							1	
-	S-00-95-005	Moteur Kohler 440 AS	Engine								1
2	S-72-04-001	Silencieux	Muffler	1							
-	S-72-04-002	Silencieux	Muffler		1						
-	S-72-04-003	Silencieux	Muffler		1		1	1			
-	S-72-04-007	Silencieux	Muffler							1	1
3	S-72-04-004	Tubulure d'échappement	Exhaust pipe	1							
-	S-72-04-006	Tubulure d'échappement	Exhaust pipe				1				
-	S-72-04-008	Tubulure d'échappement "Y"	Exhaust pipe "Y"		1		1	1			
-	S-72-04-011	Tubulure d'échappement	Exhaust pipe						1		
-	S-72-04-019	Tubulure d'échappement	Exhaust pipe							1	1
4	S-72-04-010	Ressort silencieux	Exhaust pipe spring		2		2	2	2	2	2
-	S-72-04-012	Ressort silencieux	Exhaust pipe spring	2		2					
-	S-72-04-014	Ressort silencieux	Exhaust pipe spring							1	1
5	S-72-04-015	Ressort "Y"	Exhaust pipe spring "Y"		2		2	2	2		
6	S-12-04-020	Attache silencieux	Muffler clamp	1		1					
-	S-12-04-021	Attache silencieux	Muffler clamp		1		1	1	1	1	1
7	S-00-01-016	Boulon 1/4" - 20 x 1 1/2"	Bolt 1/4" - 20 x 1 1/2"	1	1	1	1	1	1	1	1
8	S-00-03-014	Ecrou 1/4" - 20	Nut 1/4" - 20	1	1	1	1	1	1	1	1
9	S-08-04-025	Base de moteur	Engine base	1							
-	S-08-04-005	Base de moteur	Engine base			1					
10	S-08-04-008	Lame de base de moteur	Engine mount leaf	2							
-	S-08-04-001	Lame de base de moteur	Engine mount leaf		2		2	2			
-	S-08-04-002	Lame de base de moteur	Engine mount leaf		2		2	2			
-	S-08-04-003	Lame de base de moteur	Engine mount leaf						2		
-	S-08-04-004	Lame de base de moteur	Engine mount leaf						2		
-	S-08-04-006	Lame de base de moteur	Engine mount leaf			2					
9	S-08-04-010	Base de moteur	Engine base							1	1
10	S-08-04-011	Lame de base de moteur	Engine base leaf							1	1
11	S-08-04-012	"Rubber bushing"	Rubber bushing							4	4
-	S-08-01-001	"Rubber bushing"	Rubber bushing	4	4	4	4	4	4	4	4
12	S-08-04-013	Espaceur	Spacer							4	4
12	S-08-04-009	Espaceur	Spacer		4		4	4	4		
13	S-00-10-002	Douille nylon	Nylon bushing	4	4	4	4	4	4	4	4
14	S-04-01-011	Rondelle formée 3/8"	Forming washer 3/8"	4	4	4	4	4	4	4	4
15	S-00-03-005	Ecrou 3/8" - 24	Self locking nut 3/8" - 24	4	4	4	4	4	4	4	4
16	S-00-12-008	Rondelle	Lock washer	4	4						
17	S-00-01-012	Boulon 3/8" - 24 x 1 1/2" Gr.5	Hex. bolt 3/8" - 24 x 1 1/2" Gr.5	4	4	4	4	4	4	2	2
18	S-00-12-003	Rondelle 3/8" I.D.	Flat washer 3/8" I.D.	8	8	8	8	8	8	8	8
19	S-00-03-006	Ecrou	Nylon lock nut	4	4	4	4	4	4	4	4
20	S-00-01-013	Boulon 3/8" x 3" Gr.5	Bolt engine base							2	2
-	S-00-01-085	Boulon noir 7/16" - 14 x 1 1/2" Gr.5	Hex. bolt black			4					
-	S-00-01-082	Boulon 3/8" N.C. x 1 1/2" Gr.5	Hex. bolt black		4		4	4	4	4	4
-	S-00-01-086	Boulon 5/16" N.C. x 1 1/2" Gr.5	Hex. bolt black	4							
21	S-00-18-012	Carburateur HR 88A	Carburator	1		1					
-	S-00-18-013	Carburateur HD Walbro	Carburator		1		1	1	1		
-	S-00-18-014	Carburateur Mikuni	Carburator							2	2
-	S-00-18-016	Pompe à gaz Mikuni	Fuel pump							1	1
22	S-00-18-015	Adapteur de carburateur Mikuni	Flange							2	2
23	S-08-03-056	Filtre à air (silencieux)	Air filter (silencer)	1		1					
-	S-68-04-001	Filtre à air (silencieux)	Air filter (silencer)		1		1	1	1		
-	S-68-04-002	Filtre à air (silencieux)	Air filter (silencer)							1	1



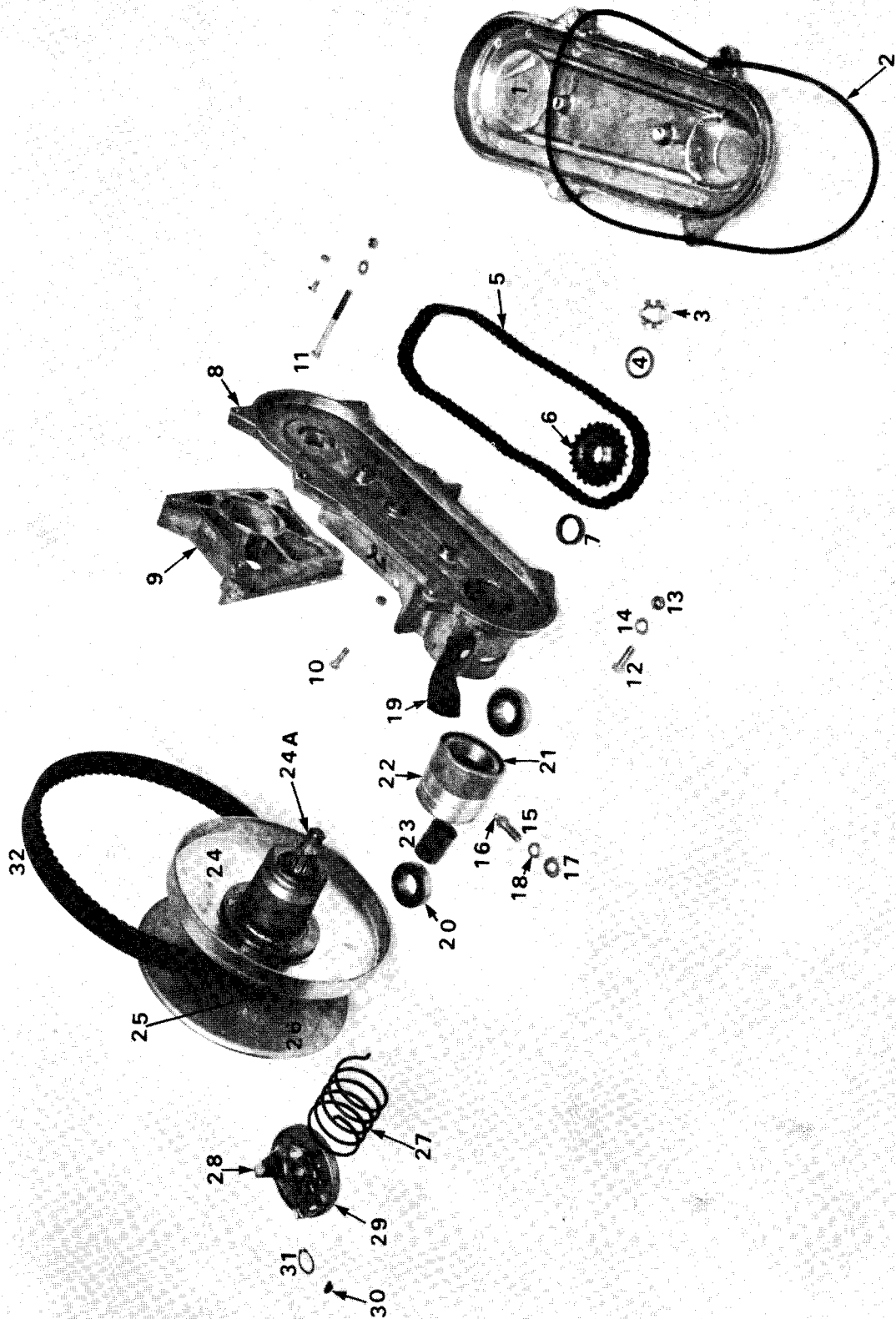
1974

NO. ILLUSTRATION	BOA-SKI	MOTEUR	ENGINE	DESCRIPTION	MK 230	MK-1 292T	MK-1 295	MK-11 292T	MK-11 340T	MK-11 440T	S/S 340T	S/S 440T
24	S-00-01-076			Boulon 1/4" - 20 x 3 1/2" Bolt 1/4" - 20 x 3 1/2"	3	3	3	3	3	3		
-	S-68-04-015			Boulon 1/4" - 20 x 3 1/2" Bolt 1/4" - 20 x 3 1/2"							3	3
25	S-08-03-067			Joint d'étanchéitéGasket	2		2					
-	S-68-04-016			Joint d'étanchéité Gasket							2	2
-	S-08-03-068			Joint d'étanchéité Gasket		2		2	2	2		
26	S-08-04-007			Levier étrangleurChoke lever	1	1	1					
27	S-13-03-130			Bouton étrangleur Choke knob	1	1	1					
-	S-73-04-009			Cable et bouton étrangleur Choke knob ass'y				1	1	1	1	1
28	S-08-03-069			Support de cable à gazThrottle cable support	1	1	1	1	1	1		
29	S-68-04-012			Conduit d'air entrée Air duct intake	1							
	S-68-04-013			Conduit d'air entrée Air duct intake			1					
	S-68-04-003			Conduit d'air entréeAir duct intake		1						
	S-68-04-004			Conduit d'air entrée Air duct intake				1				
	S-68-04-005			Conduit d'air entrée Air duct intake					1	1	1	
	S-68-04-006			Conduit d'air entréeAir duct intake								1
30	S-68-04-007			Conduit d'air d'échappement Air duct exhaust		1						
-	S-68-04-008			Conduit d'air d'échappement Air duct exhaust				1	1			
-	S-68-04-009			Conduit d'air d'échappementAir duct exhaust							1	
-	S-68-04-010			Conduit d'air d'échappement Air duct exhaust								1
-	S-68-04-011			Conduit d'air d'échappement Air duct exhaust						1		
31	S-00-02-004			Rivet al. 3/16" x 3/8"Pop rivet 3/16" x 3/8"	3	7	7	9	9	9	9	9



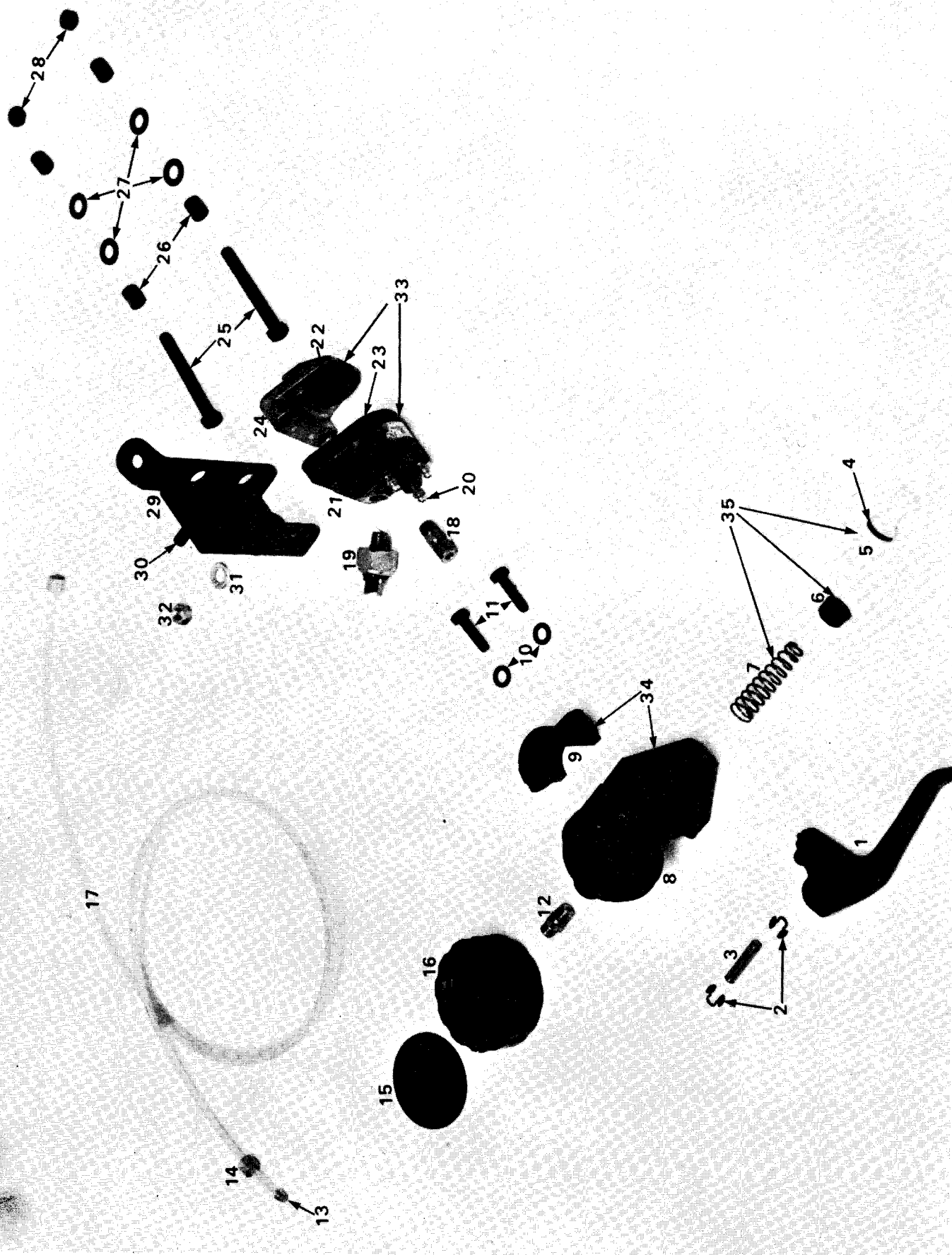
1974

No Illustration	BOA-SKI	EMBRAYAGE DE COMMANDE		DRIVE CLUTCH		MK 230	MK I 292T	MK I 295	MK II 292T	MK II 340T	MK II 440T	S/S 340T	S/S 440T
		DESCRIPTION											
1	S-00-01-038	Boulon 1/2" - 20 x 1 1/2" Gr.5	Bolt 1/2" - 20 x 1 1/2" Gr.5			1							
-	S-00-01-052	Boulon 1/2" - 20 x 4 3/4" Gr.5	Bolt 1/2" - 20 x 4 3/4" Gr.5					1					
-	S-00-01-087	Boulon 1/2" - 20 x 5" Gr.5	Bolt 1/2" - 20 x 5" Gr.5					1		1	1	1	
2	S-08-01-035	Rondelle	Washer			2		1	2	1	1	1	
3	S-09-02-006	Couvert régulateur	Regulator cover			1		1					
-	S-09-04-031	Couvert régulateur	Regulator cover					1		1	1	1	
4	S-69-04-045	Support pesée	Weight support					1		1	1	1	
5	S-00-01-084	Boulon 1/4 N.F. 5/8 thread 1 1/2 Gr.8	Bolt					4		4	4	4	
6	S-09-04-020	Espaceur	Brass spacer					8		8	8	8	
7	S-09-04-035	Coussinet	Bushing					4		4	4	4	
8	S-09-04-063	Pesée	Weight					4		4	4	4	
-	S-09-04-065	Pesée	Weight									4	
9	S-00-03-030	Ecrou 1/4" N.F. locking	Nut 1/4" N.F. locking					4		4	4	4	
	S-09-04-020	Régulateur ass.	Regulator ass'y			1							
	S-09-04-021	Régulateur ass.	Regulator ass'y					1					
	S-09-04-030	Régulateur ass.	Regulator ass'y					1		1	1	1	
10	S-09-01-053	Poulie mobile ass.	Sliding plate ass'y			1		1					
-	S-09-04-008	Poulie mobile ass.	Sliding plate ass'y					1		1	1	1	
11	S-09-04-003	Ressort	Spring			1							
-	S-09-04-062	Ressort	Spring					1					
-	S-69-04-009	Ressort	Spring					1		1	1	1	
12	S-09-04-010	Rondelle	Washer					1		1	1	1	
13	S-09-04-011	Retenue ressort	Spring holder					1		1	1	1	
-	S-09-01-036	Retenue ressort	Spring holder			1		1					
14	S-00-10-003	Coussinet bronze	Oilite bushing			1		1	1	1	1	1	
15	S-09-01-002	Arbre principal ass.	Main shaft ass'y			1							
-	S-09-02-004	Arbre principal ass.	Main shaft ass'y					1					
-	S-09-01-024	Arbre principal ass.	Main shaft ass'y					1		1	1	1	
16	S-00-04-001	Graisneur	Grease fitting					1		1	1	1	



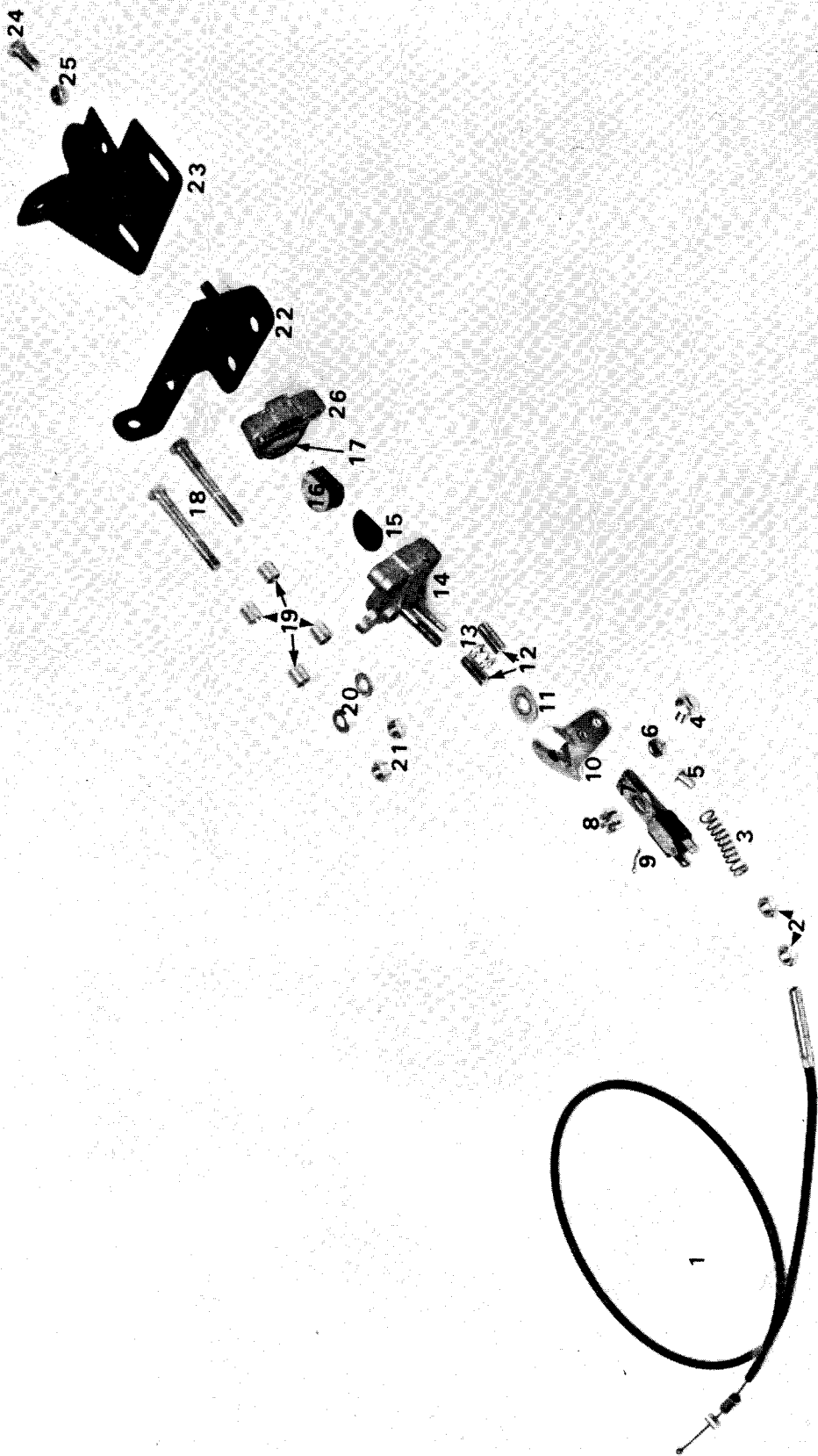
1974

No illustration	BOA-SKI	CONVERTISSEUR		CONVERTER		MK 230	MK I 292T	MK I 295	MK II 292T	MK II 340T	MK II 440T	SS 340T	SS 440T
		DESCRIPTION											
1	S-69-01-018	Couvert boîtier	Chain case cover	1	1	1	1	1	1	1			
2	S-69-01-019	Joint d'étanchéité	Oil seal	1	1	1	1	1	1	1			
3	S-00-03-031	Ecrou 3/4" N.F.	Nut 3/4" N.F.	1	1	1	1	1	1	1			
4	S-00-12-012	Rondelle 3/4" I.D.	Washer 3/4" I.D. "lock"	1	1	1	1	1	1	1			
5	S-69-01-032	Chaîne RC-35-2-86	Chain RC-35-2-86	1	1	1	1	1	1	1			
6	S-09-04-006	Roue d'engrenage 15 dents double	Sprocket 15 th. double	1									
-	S-09-04-007	Roue d'engrenage 16 dents double	Sprocket 16 th. double				1						
-	S-69-01-014	Roue d'engrenage 17 dents double	Sprocket 17 th. double				1			1			
-	S-69-01-012	Roue d'engrenage 18 dents double	Sprocket 18 th. double								1		1
-	S-69-01-016	Roue d'engrenage 19 dents double	Sprocket 19 th. double										1
7	S-09-01-039	Espaceur	Spacer	1	1	1	1	1	1	1			
8	S-69-01-017	Boîtier	Chain case	1	1	1	1	1	1	1			
9	S-09-03-034	Espaceur boîtier	Chain case spacer				1	1	1	1			
10	S-00-01-028	Boulon 5/16" - 24 x 2"	Bolt 5/16" - 24 x 2"	2	2	2	2	2	2	2			
11	S-00-01-027	Boulon 5/16" - 24 x 3 1/2"	Bolt 5/16" - 24 x 3 1/2"	2	2	2	2	2	2	2			
12	S-00-01-029	Boulon 5/16" - 24 x 1 1/2"	Bolt 5/16" - 24 x 1 1/2"				2	2	2	2			
13	S-00-03-002	Ecrou 5/16" - 24	Nut 5/16" - 24	8	8	8	8	8	8	8			
14	S-00-12-002	Rondelle 5/16" I.D. c/p	Washer 5/16" I.D. c/p	6	6	6	6	6	6	6			
15	S-09-02-009	Boulon d'ajustement 3/8" x 1" N.C.	Adjusting bolt 3/8" x 1" N.C.	1	1	1	1	1	1	1			
	S-64-01-001	Boulon blocage 3/8" x 1" N.C.	Bolt 3/8" x 1" N.C.	1	1	1	1	1	1	1			
16	S-00-04-002	Graisseur	Grease fitting	2	2	2	2	2	2	2			
17	S-09-01-020	Rondelle	Lock washer										
18	S-00-12-001	Rondelle	Washer										
19	S-09-04-061	Support garde-clutch	Support clutch cover								1	1	1
-	S-09-04-060	Support garde-clutch	Support clutch cover	1	1	1	1	1	1	1			
20	S-00-08-003	Coussinet à billes	Bearing	2	2	2	2	2	2	2			
21	S-69-01-022	Joint d'étanchéité	"O" Ring	1	1	1	1	1	1	1			
22	S-69-01-021	Palier convertisseur	Bearing hub	1	1	1	1	1	1	1			
23	S-09-01-018	Espaceur	Spacer	1	1	1	1	1	1	1			
	S-69-02-033	Bouchon nylon 3/8" N.C.	Nylon plug 3/8" N.C.	1	1	1	1	1	1	1			
24	S-09-01-017	Arbre fixe ass.	Converter shaft	1	1	1	1	1	1	1			
-	S-09-04-017	Arbre fixe ass.	Converter shaft				1	1	1	1			
25	S-69-01-006	Coussinet bronze	Oilite bushing	1	1	1	1	1	1	1			
-	S-69-04-016	Coussinet bronze	Oilite bushing								1	1	1
26	S-09-01-038	Plaque mobile ass.	Sliding plate ass'y	1	1	1	1	1	1	1			
-	S-09-04-038	Plaque mobile ass.	Sliding plate ass'y				1	1	1	1			
27	S-69-01-002	Ressort torsion	Torsion spring	1	1	1	1	1	1	1			
-	S-69-04-017	Ressort torsion	Torsion spring				1	1	1	1			
28	S-69-01-005	Espaceur nylon	Nylon spacer	3	3	3	3	3	3	3			
-	S-69-04-015	Espaceur nylon	Nylon spacer				3	3	3	3			
29	S-69-01-042	Noyau à came	Converter cam	1	1	1	1	1	1	1			
-	S-69-04-042	Noyau à came	Converter cam				1	1	1	1			
30	S-00-19-011	Clé	Woodruff key	1	1	1	1	1	1	1			
-	S-09-04-067	Clé 3/16" x 3 1/2"	Key 3/16" x 3 1/2"				1	1	1	1			
31	S-00-06-004	Goupille 1/8" x 1 1/2"	Roll pin 1/8" x 1 1/2"	1	1	1	1	1	1	1			
-	S-00-09-004	Clip de retenue	Snap ring				1	1	1	1			
32	S-09-01-040	Courroie 1 3/16" x 48 1/8"	Drive belt 1 3/16" x 48 1/8"										1
-	S-09-04-040	Courroie	Drive belt										1



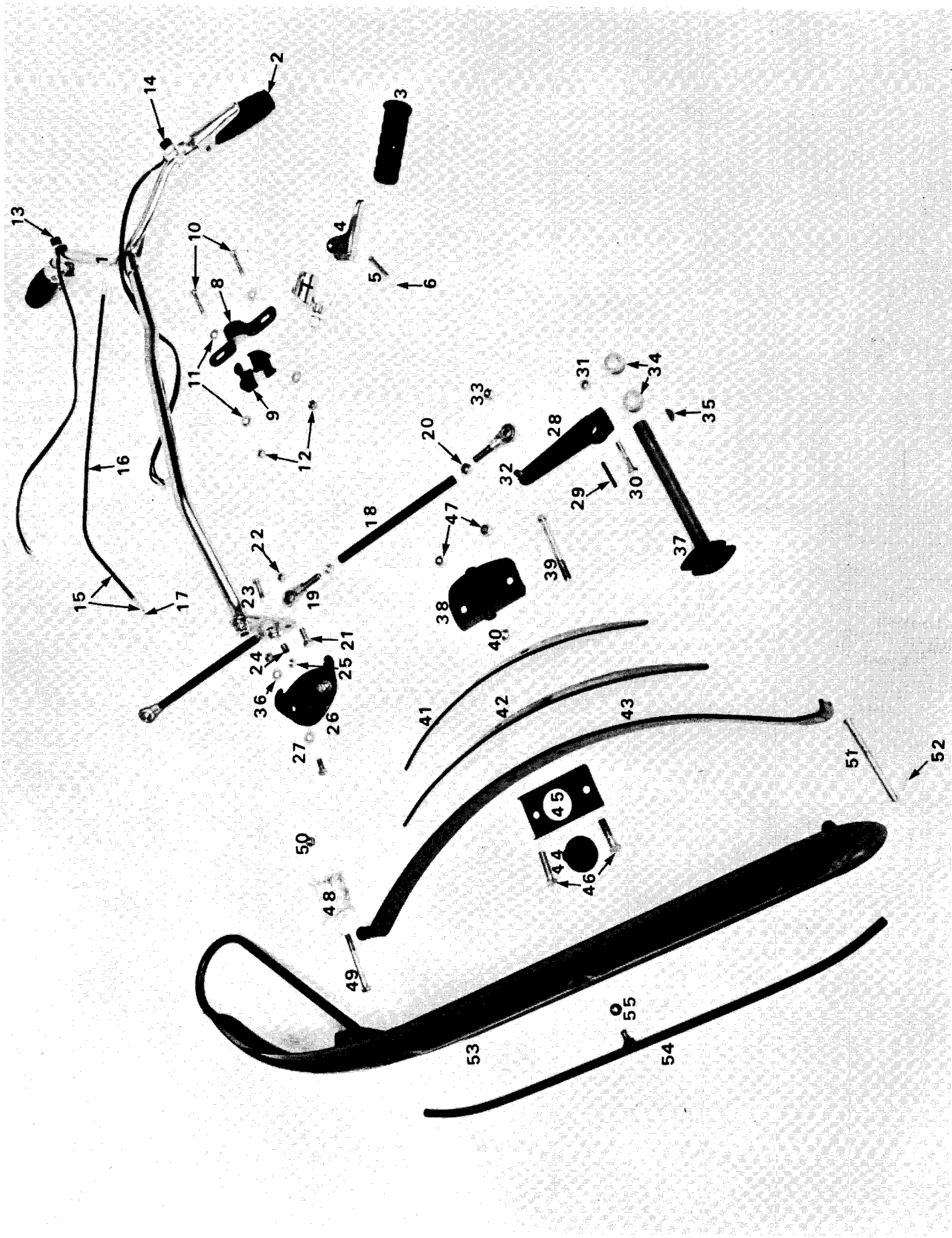
1974

NO ILLUSTRATION	BOA-SKI	FREIN BRAKE		MK 230	MK I 292T	MK I 295	MK II 292T	MK II 340T	MK II 440T	LOE S/S	440T S/S
		DESCRIPTION									
1	S-67-04-004	Levier	Lever mach.							1	1
2	S-00-19-071	Reteneur pression	Clip ring							2	2
3	S-66-04-001	Rivet	Pin							1	1
4	S-66-04-002	"O Ring"	O Ring							1	1
5	S-66-04-003	Piston	Piston							1	1
6	S-66-04-004	"Cup"	Primary cup							1	1
7	S-66-04-005	Ressort	Spring							1	1
8	S-66-04-006	Réservoir	Body mach.							1	1
9	S-66-04-007	Poignet	Clamp-haft							1	1
10	S-00-12-025	Rondelle 1/4" I.D.	Washer 1/4" I.D.							2	2
11	S-00-01-031	Boulon 1/4" N.C. x 1"	Bolt 1/4" N.C. x 1"							2	2
12	S-06-03-018	Union (brass)	Fitting							1	1
31	S-66-04-009	Bague	Sleeve							2	2
14	S-66-04-010	Coupleur	Coupler							2	2
15	S-66-04-011	Joint	Below gasket							1	1
16	S-66-04-012	Couvercle	Cover							1	1
17	S-06-03-019	Tube	Plastic tubing							1	1
18	S-06-03-018	Union	Fitting							1	1
19	S-06-03-017	Interrupteur	Switch							1	1
20	S-66-04-013	Soupape	Bleeder							3	3
21	S-66-04-014	Support piston	Piston side							1	1
22	S-06-03-020	Garniture frein	Friction pad							2	2
23	S-66-04-015	Piston	Piston							1	1
24	S-66-04-016	Support garniture	Cab side							1	1
25	S-00-01-013	Boulon 3/8" - 24 x 3 1/2" Gr.5	Bolt 3/8" - 24 x 3 1/2" Gr.5							2	2
26	S-66-04-026	Douille	Bushing							4	4
27	S-00-12-003	Rondelle 3/8" noir	Washer 3/8" black							4	4
28	S-00-03-001	Ecrou 3/8" - 24 noir	Nut 3/8" - 24 black							2	2
29	S-06-02-006	Support frein	Brake holder							1	1
30	S-00-01-007	Boulon 5/16" N.F. x 3/4".....	Bolt 5/16" N.F. x 3/4"							2	2
31	S-00-12-002	Rondelle 5/16"	Washer 5/16"							2	2
32	S-00-03-002	Ecrou 5/16" N.F.	Nut 5/16" N.F.							2	2
33	S-06-03-022	Frein ass.	Disc brake ass'y							1	1
34	S-66-04-019	Maître cyl. ass.	Master							1	1
35	S-66-04-025	"Repair part kit"	Repair part kit							1	1



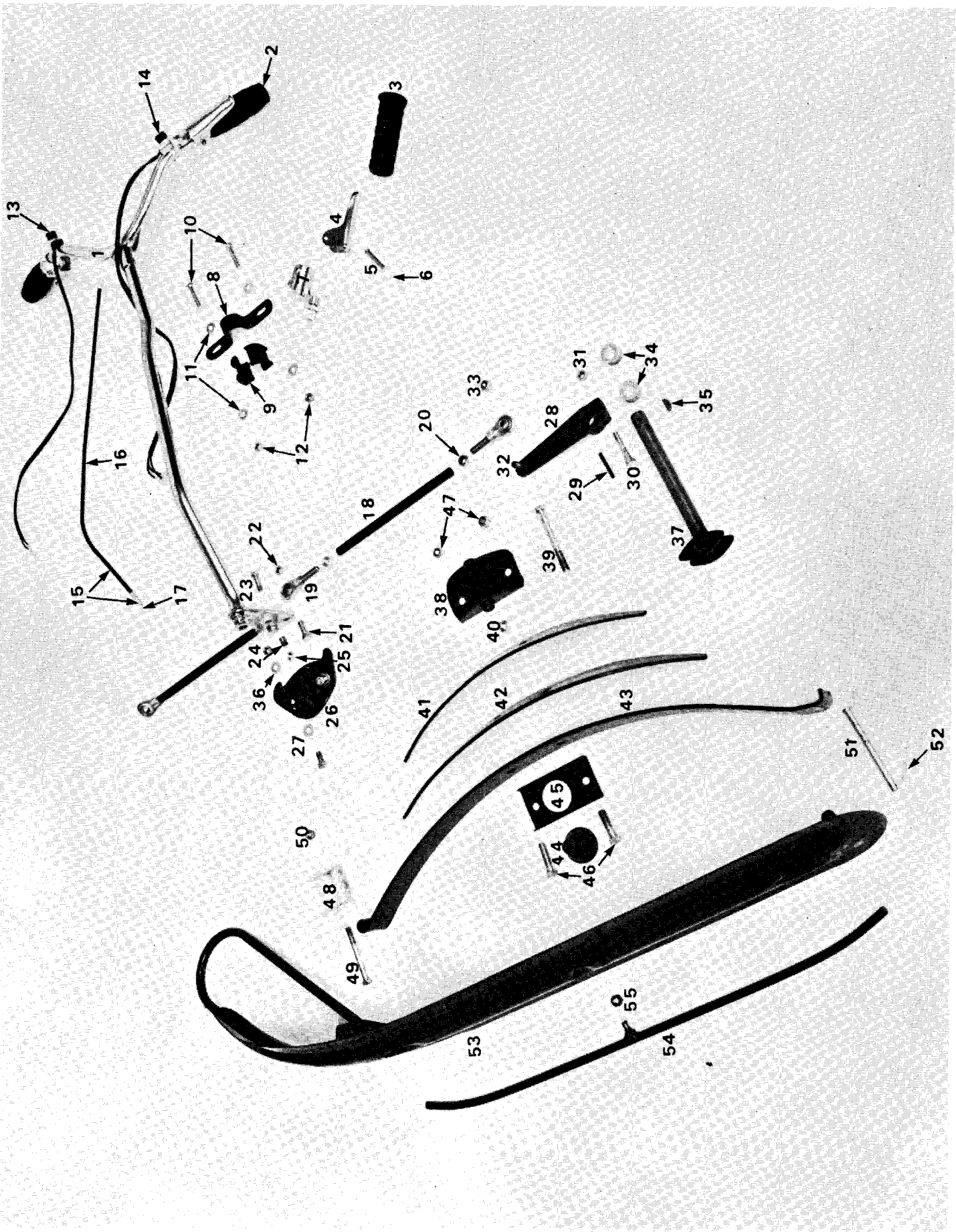
1974

NO ILLUSTRATION	BOA-SKI	FREIN		BRAKE		MK 220	MK I 292T	MK I 295	MK II 292T	MK II 340T	MK II 440T	S/S 340T	S/S 440T
		DESCRIPTION											
1	S-00-19-072	Cable ass. frein		Brake cable ass'y		1							
-	S-00-19-073	Cable ass. frein		Brake cable ass'y			1	1					
-	S-00-19-074	Cable ass. frein		Brake cable ass'y					1	1			
2	S-00-03-008	Ecrou 5/16" N.F.		Nut 5/16" N.F.		2	2	2	2	2			
3	S-66-04-018	Ressort compression		Spring		1	1	1	1	1			
4	S-00-01-002	Boulon attache cable 1/4" x 3/4" N.F.		Screw 1/4" x 3/4" N.F.		1	1	1	1	1			
5	S-06-01-001	Attache cable		Cable attachment		1	1	1	1	1			
5	S-66-04-028	Rivet		Rivet		1	1	1	1	1			
6	S-00-03-004	Ecrou 1/4" N.F.		Nut 1/4" N.F.		1	1	1	1	1			
7	S-66-04-017	Interrupteur		Switch (brake)		1	1	1	1	1			
8	S-00-03-035	Ecrou cannelé 5/16" N.F.		Nut 5/16" N.F.		1	1	1	1	1			
9	S-00-06-002	"Cotter pin" 1/16"		Cotter pin 1/16"		1	1	1	1	1			
10	S-66-04-020	Levier		Arm		1	1	1	1	1			
11	S-00-12-002	Rondelle 5/16" I.D. x 1" O.D.		Washer 5/16" O.D. x 1" I.D.		1	1	1	1	1			
12	S-66-04-021	Piston		Piston (rod)		2	2	2	2	2			
13	S-66-04-022	Ressort		Spring		1	1	1	1	1			
14	S-66-02-005	Support extérieur		Exterior support		1	1	1	1	1			
15	S-66-04-023	Rondelle garniture de frein		Washer (spacer)		1	1	1	1	1			
16	S-66-02-003	Garniture de frein		Pad (lining)		1	1	1	1	1			
17	S-66-02-002	Garniture de frein		Pad (lining)		1	1	1	1	1			
18	S-00-01-039	Boulon 5/16" N.F. x 2 1/2"		Bolt 5/16" N.F. x 2 1/2"		2	2	2	2	2			
19	S-66-04-027	Douille		Bushing		4	4	4	4	4			
20	S-00-12-002	Rondelle 5/16"		Washer 5/16"		2	2	2	2	2			
21	S-00-03-002	Ecrou		Nut		2	2	2	2	2			
22	S-06-02-003	Support de frein		Brake support		1	1	1	1	1			
23	S-06-02-006	Attache frein		Brake holder		1	1	1	1	1			
24	S-00-01-007	Boulon 5/16" N.F. x 3/4"		Bolt 5/16" N.F. x 3/4"		2	2	2	2	2			
25	S-00-03-002	Ecrou		Nut		2	2	2	2	2			
	S-66-02-001	Frein ass.		Brake ass'y		1	1	1	1	1			
26	S-66-02-004	Support intérieur		Interior support		1	1	1	1	1			



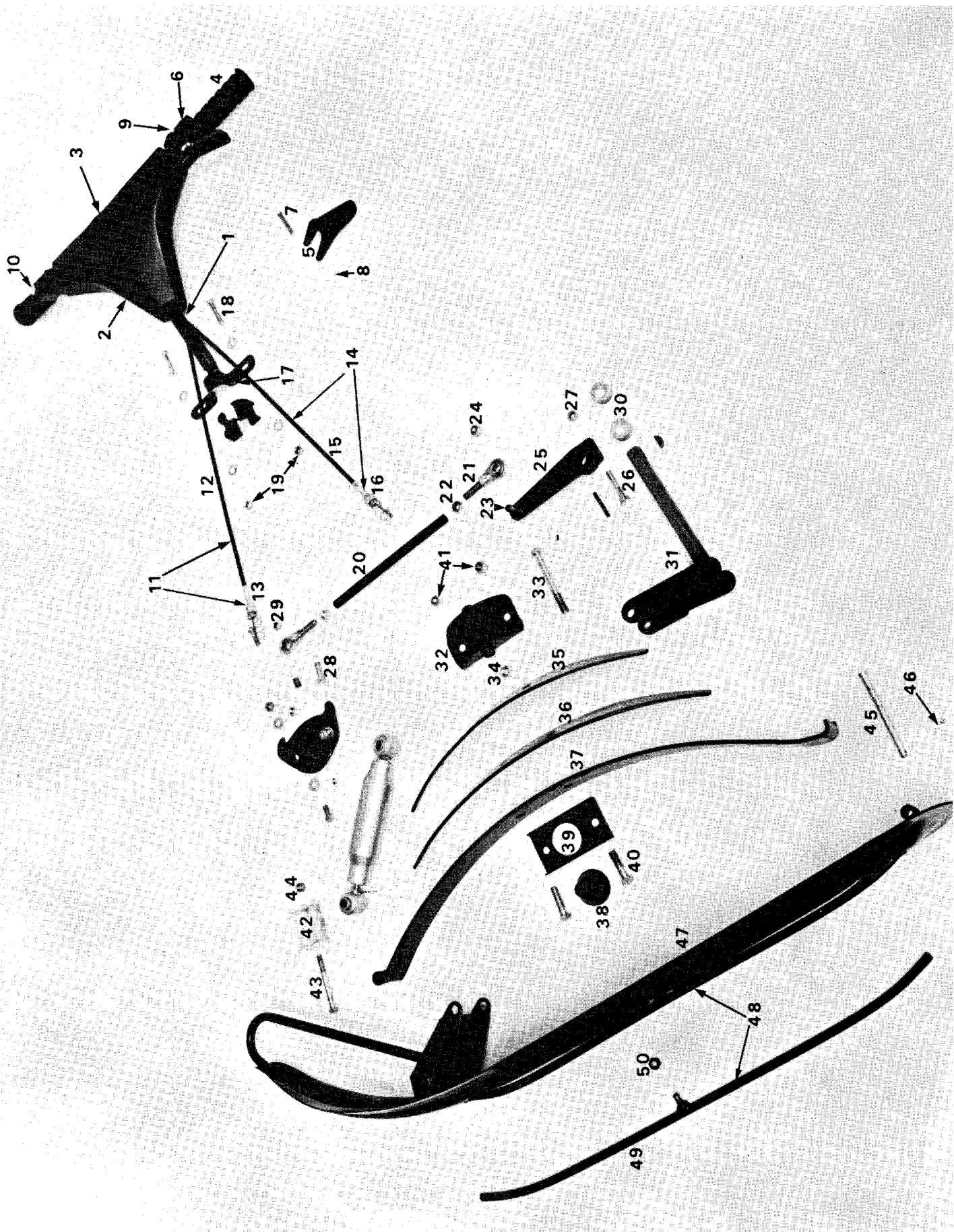
1974

No illustration	BOA-SKI	CONDUITE		STEERING	MK 230	MK I 292T	MK I 295	MK II 292T	MK II 340T	MK II 440T	S/S 340T	S/S 440T
		DESCRIPTION										
1	S-07-03-028	Guidon	Handle bar		1							
-	S-07-03-037	Guidon	Handle bar			1						
-	S-07-03-036	Guidon	Handle bar				1					
2	S-67-01-005	Poignée (rouge)	Handle grip		2							
3	S-00-19-045	Poignée (noir)	Handle grip			2	2					
4	S-07-04-001	Clanchette (gaz - frein)	Gas and brake lever		2	2	2					
5	S-00-06-007	Goupille	Handle pin		2	2	2					
6	S-00-09-003	Clip de retenue	Snap ring		2	2	2					
7	S-07-03-054	Support de clanchette	Handle		2	2	2					
8	S-07-03-050	Collet de conduite	Steering collar		1	1	1					
9	S-07-03-051	Coussinet nylon	Nylon bushing		2	2	2					
10	S-00-01-029	Boulon 5/16" - 24 x 1 1/2"	Bolt 5/16" - 24 x 1 1/2"		2	2	2					
11	S-00-12-002	Rondelle	Washer		4	4	4					
12	S-00-03-002	Ecrou	Nut		2	2	2					
13	S-00-19-043	"Kill switch"	Kill switch		1	1	1					
14	S-00-19-044	"Dimmer switch"	Dimmer switch		1	1	1					
15	S-67-04-020	Cable à gaz ass.	Gas cable ass'y		1							
-	S-67-04-021	Cable à gaz ass.	Gas cable ass'y			1	1					
16	S-67-04-014	Enveloppe à gaz	Case		1							
-	S-67-04-002	Enveloppe à gaz	Case			1	1					
17	S-67-04-013	Cable à gaz	Wire		1							
-	S-67-04-011	Cable à gaz	Wire			1	1					
18	S-07-04-033	Joint d'accouplement	Tie rod		2							
-	S-07-04-003	Joint d'accouplement	Tie rod			2	2					
19	S-00-19-010	Joint pivot	Tie rod end		2	4	4					
20	S-00-03-012	Ecrou 3/8" - 16	Nut (jam) 3/8" - 16		2	4	4					
21	S-00-01-012	Boulon 3/8" - 24 x 1 1/2"	Bolt 3/8" - 24 x 1 1/2"		2	2	2					
22	S-00-03-005	Ecrou 3/8" - 24	Nut 3/8" - 24		2	2	2					
23	S-00-01-045	Boulon 5/16" - 24 x 1"	Bolt 5/16" - 24 x 1"		2	2	2					
24	S-06-02-002	Douille	Sleeve		1	1	1					
25	S-01-03-002	Ecrou 5/16" - 24	Nut 5/16" - 24		2	2	2					
26	S-01-02-069	Plaque d'arrêt	Stopper plate		1	1	1					
27	S-00-12-002	Rondelle	Washer		1	1	1					
28	S-07-01-031	Bras de conduite	Steering arm		2	2	2					
29	S-00-06-003	Goupille 3/16" x 1 1/2"	Roll pin 3/16" x 1 1/2"		2	2	2					
30	S-00-01-029	Boulon 5/16" - 24 x 1 1/2"	Bolt 5/16" - 24 x 1 1/2"		2	2	2					
31	S-00-03-002	Ecrou	Nut		2	2	2					
32	S-00-01-012	Boulon 3/8" - 24 x 1 1/2"	Bolt 3/8" - 24 x 1 1/2"		2	2	2					
33	S-00-03-005	Ecrou 3/8" - 24	Nut 3/8" - 24		2	2	2					
34	S-00-10-001	Coussinet bronze	Oilite bushing		4	4	4					
35	S-00-19-011	Clé	Woodruff key		2	2	2					
36	S-00-12-006	Rondelle	Spring washer		2							
37	S-07-01-025	Jambe de ski droit	Ski leg R.H.		1							
-	S-07-01-024	Jambe de ski gauche	Ski leg L.H.		1							
-	S-07-01-066	Jambe de ski droit	Ski leg R.H.			1	1					
-	S-07-01-067	Jambe de ski gauche	Ski leg L.H.			1	1					
38	S-02-01-002	Harnais	Spring coupler		2	2	2					
39	S-00-01-013	Boulon 3/8" - 24 x 3 1/2"	Bolt 3/8" - 24 x 3 1/2"		2	2	2					
40	S-00-03-005	Ecrou 3/8" - 24	Nut 3/8" - 24		2	2	2					
41	S-62-01-003	Lame secondaire	Spring leaf		2	2	2					
42	S-62-01-002	Lame intermédiaire	Spring leaf									
43	S-62-01-001	Lame principale	Spring leaf			2	2					
-	S-62-01-005	Lame principale	Spring leaf		2							
44	S-02-02-003	Amortisseur de caoutchouc	Rubber shock absorber		2	2	2					
45	S-02-02-004	Plaque " " "	Shock absorber plate		2	2	2					
46	S-00-01-012	Boulon 3/8" - 24 x 1 1/2"	Bolt 3/8" - 24 x 1 1/2"		4	4	4					
47	S-00-03-005	Ecrou 3/8" - 24	Nut 3/8" - 24		4	4	4					



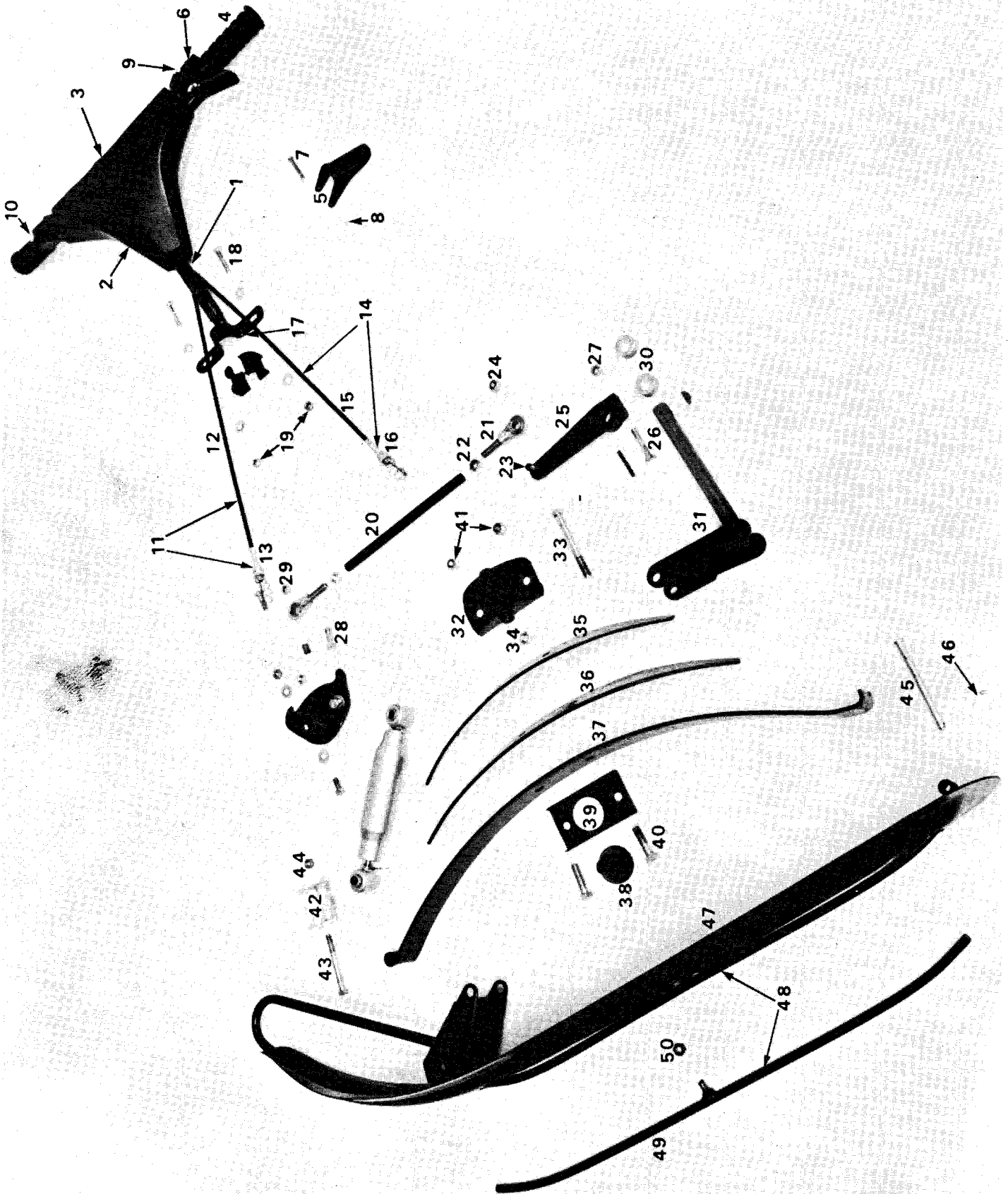
1974

No illustration	BOA-SKI	CONDUITE		STEERING		MK 290	MK I 292T	MK I 295	MK II 292T	MK II 340T	MK II 440T	S/S 340T	S/S 440T
		DESCRIPTION											
48	S-02-03-030	Glissière nylon	Nylon slide			2							
49	S-00-01-008	Boulon 5/16" - 24 x 3" Gr.5	Bolt 5/16" - 24 x 3" Gr.5			2							
50	S-00-03-044	Ecrou 5/16" - 24	Nut 5/16" - 24			2							
51	S-62-01-004	Douille arr. ski 5/16" x 4"	Hinge pin 5/16" x 4"			2							
52	S-00-06-002	"Cotter pin" 3/32" x 1"	Cotter pin 3/32" x 1"			2							
53	S-02-03-025	Patin	Ski			2							
-	S-02-03-026	Patin	Ski						2	2			
-	S-02-03-031	Patin ass. droit	Ski ass'y R.H.			1							
-	S-02-03-032	Patin ass. gauche	Ski ass'y L.H.....			1							
-	S-02-03-033	Patin ass. droit	Ski ass'y R.H.						1	1			
-	S-02-03-034	Patin ass. gauche	Ski ass'y L.H.						1	1			
54	S-02-01-029	Lame d'usure	Ski runner			2							
-	S-02-02-006	Lame d'usure	Ski runner						2	2			
55	S-00-03-008	Ecrou 5/16" - 24	Nut 5/16" - 24			2			2	2			

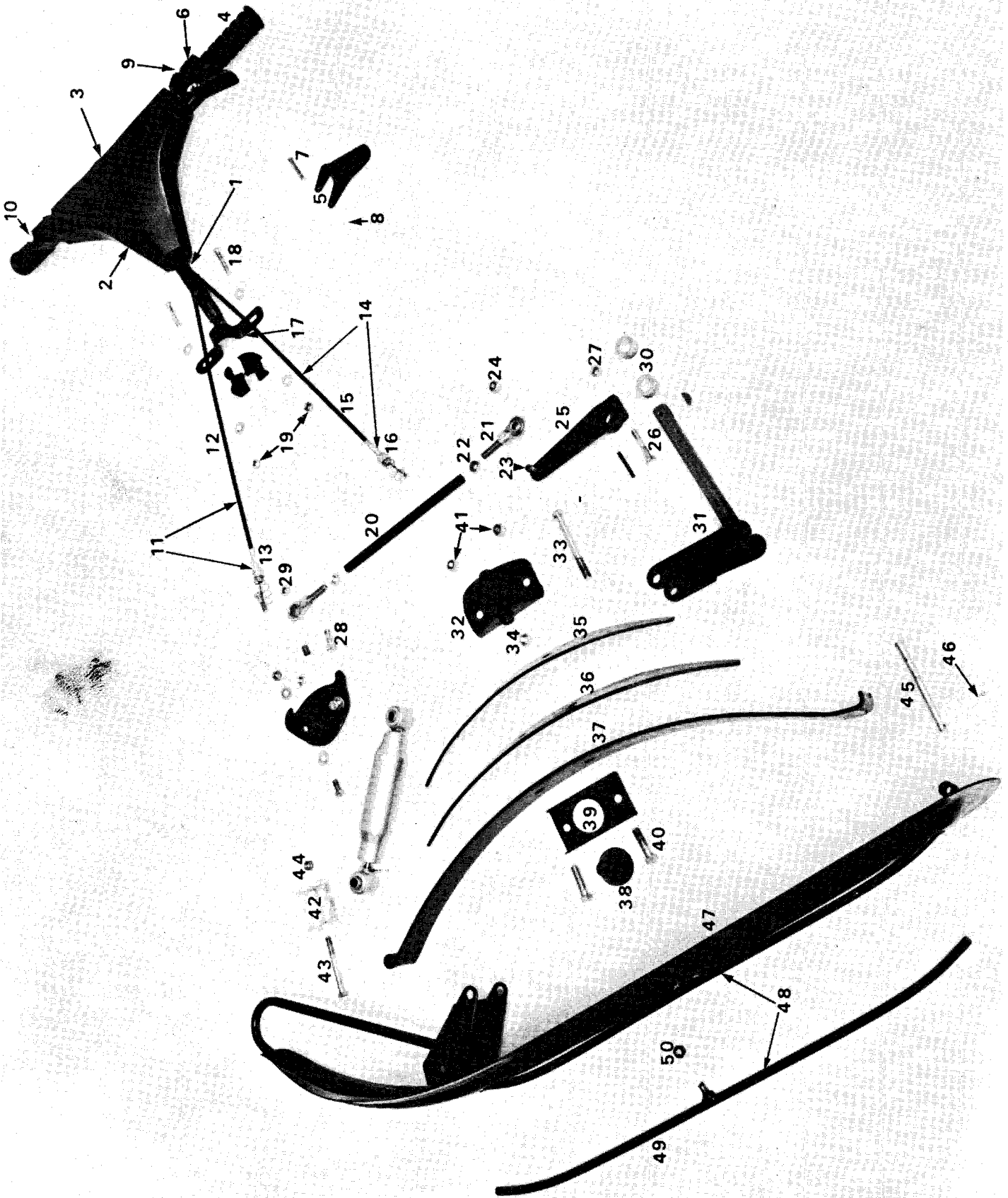


1974

NO. ILLUSTRATION	BOA-SKI	CONDUITE		STEERING		MK-230	MK-1 292T	MK-1 295	MK-11 292T	MK-11 340T	MK-11 440T	S/S 340T	S/S 440T
		DESCRIPTION											
1	S-07-04-038	Guidon	Handle bar						1	1			
-	S-07-04-032	Guidon	Handle bar									1	1
2	S-67-04-003	Protecteur	Crash pad						1	1		1	1
3	S-67-04-008	Ornement de protecteur	Plastic crest						1	1		1	1
4	S-00-19-045	Poignée noire	Handle grip						2	2		2	2
5	S-67-04-006	Clanchette (plastic)	Lever (gas-brake)						2	2		1	1
6	S-67-04-007	Support de clanchette	Lever support						2	2		1	1
-	S-67-04-005	Support ass.	Handle ass'y						2	2		1	1
7	S-00-06-007	Goupille	Handle pin						2	2		1	1
8	S-00-09-003	Clip	Handle pin lock						2	2		1	1
9	S-00-19-044	Dimmer switch	Dimmer switch									1	1
-	S-00-19-065	Dimmer switch	Dimmer switch						1	1			
10	S-00-19-064	Interrupteur	Kill switch						1	1		1	1
11	S-67-04-021	Enveloppe à gaz ass.	Throttle cable ass'y						1	1		1	
12	S-67-04-002	Enveloppe	Case						1	1		1	
13	S-67-04-011	Cable	Wire						1	1		1	
-	S-67-04-007	Enveloppe à gaz ass. MIKUNI	Throttle cable ass'y										1
14	S-00-19-052	Cable à frein ass.	Brake cable ass'y						1	1			
15	S-00-19-057	Enveloppe	Case						1	1			
16	S-00-19-054	Cable	Wire						1	1			
	S-07-04-045	Tige guidon	Steering rod						1	1			
	S-07-04-047	Tige guidon	Steering rod										1
17	S-07-04-048	Support tige guidon	Steering rod support										1
18	S-00-01-029	Boulon tige guidon	Bolt						2	2		2	2
19	S-00-03-002	Ecrou tige guidon	Nut						2	2		2	2
20	S-07-03-053	Joint d'accouplement	Tie rod						2	2			
-	S-07-04-009	Joint d'accouplement	Tie rod									2	2
21	S-00-19-010	Joint pivot	Tie rod end						1	1			
-	S-00-19-070	Joint pivot	Tie rod end										1
22	S-00-03-012	Ecrou	Jam nut						4	4		4	4
23	S-00-01-012	Boulon	Bolt						2	2		2	2
24	S-00-03-005	Ecrou	Nut						2	2		2	2
25	S-67-04-010	Bras de conduite droit	Steering arm						1	1			
-	S-67-04-001	Bras de conduite gauche	Steering arm						1	1			
-	S-67-04-016	Bras de conduite droit	Steering arm										1
-	S-67-04-015	Bras de conduite gauche	Steering arm										1
26	S-00-01-029	Boulon	Bolt						2	2			
27	S-00-03-002	Ecrou	Nut						2	2			
28	S-00-01-012	Boulon	Bolt										2
29	S-00-03-005	Ecrou	Nut										2
30	S-00-10-001	Coussinet bronze	Oilite bushing						4	4			
-	S-00-10-005	Coussinet bronze	Oilite bushing										4
31	S-07-04-069	Jambe de ski gauche	Ski leg L.H.						1	1			
-	S-07-04-068	Jambe de ski droit	Ski leg R.H.						1	1			
-	S-07-04-081	Jambe de ski gauche	Ski leg L.H.										1
-	S-07-04-082	Jambe de ski droit	Ski leg R.H.										1
32	S-02-01-002	Harnais	Spring coupler						2	2			
-	S-02-04-052	Harnais	Spring coupler										2
33	S-00-01-013	Boulon	Bolt						2	2		2	2
34	S-00-03-005	Ecrou	Nut						2	2		2	2
35	S-62-01-003	Lame secondaire	Spring leaf						2	2			
36	S-62-01-002	Lame intermédiaire	Spring leaf						2	2			
37	S-62-01-001	Lame principale	Spring leaf						2	2			
38	S-02-02-003	Amortisseur caoutchouc	Rubber shock absorber						2	2			
39	S-02-02-004	Plaque amortisseur	Shock absorber plate						2	2			
40	S-00-01-012	Boulon	Bolt						2	2		2	2
41	S-00-03-005	Ecrou	Nut						2	2		2	2

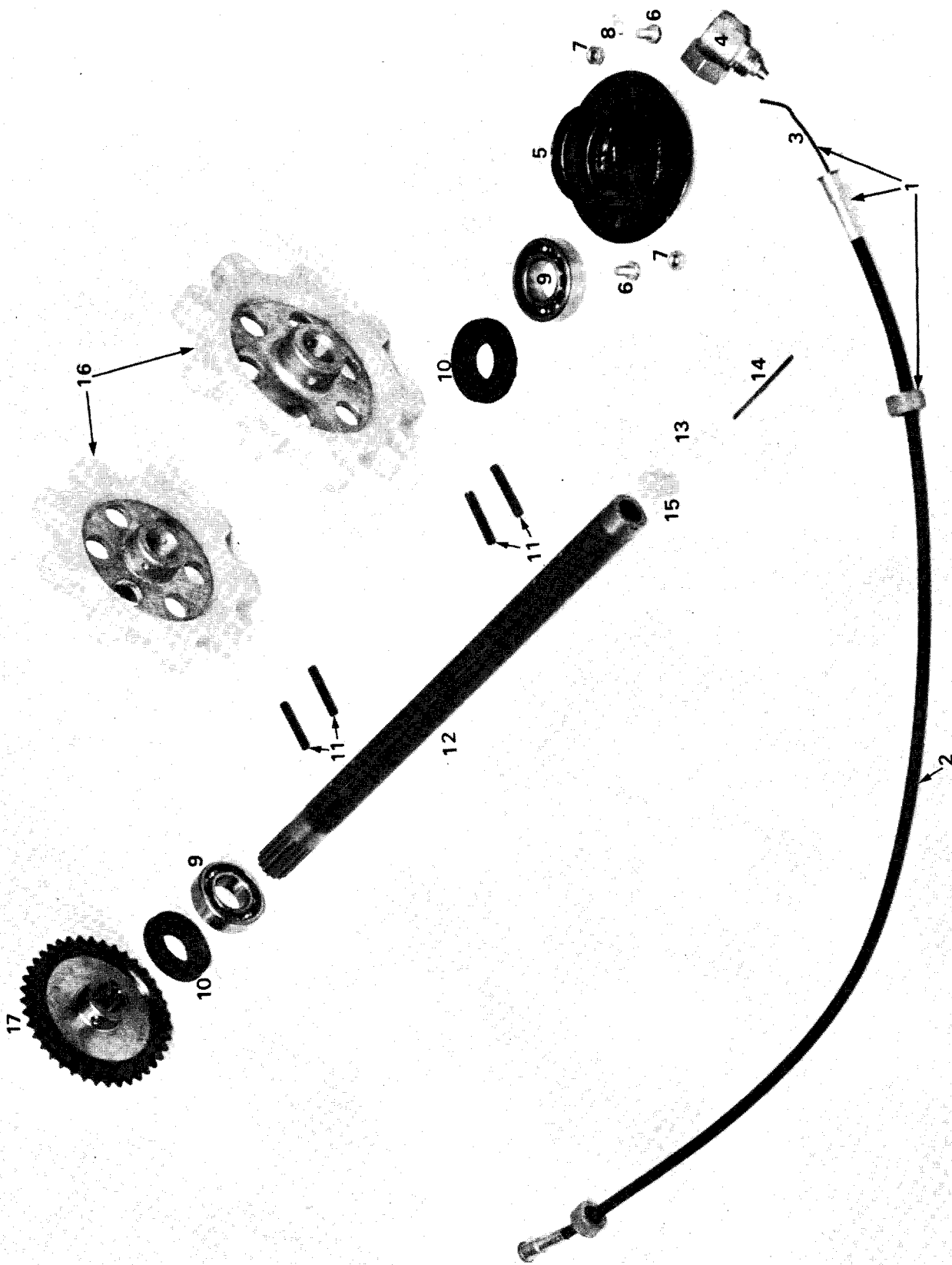


NO. ILLUSTRATION	BOA-SKI	CONDUITE		STEERING		MK-230	MK-1 292T	MK-1 295	MK-11 292T	MK-11 340T	MK-11 440T	S/S 340T	S/S 440T
		DESCRIPTION											
1	S-07-04-038	Guidon	Handle bar						1	1	1		
-	S-07-04-032	Guidon	Handle bar									1	1
2	S-67-04-003	Protecteur	Crash pad						1	1	1		1
3	S-67-04-008	Ornement de protecteur	Plastic crest						1	1	1		1
4	S-00-19-045	Poignée noire	Handle grip						2	2	2		2
5	S-67-04-006	Clanchette (plastic)	Lever (gas-brake)						2	2	2		1
6	S-67-04-007	Support de clanchette	Lever support						2	2	2		1
-	S-67-04-005	Support ass.	Handle ass'y						2	2	2		1
7	S-00-06-007	Goupille	Handle pin						2	2	2		1
8	S-00-09-003	Clip	Handle pin lock						2	2	2		1
9	S-00-19-044	Dimmer switch	Dimmer switch										1
-	S-00-19-065	Dimmer switch	Dimmer switch						1	1	1		
10	S-00-19-064	Interrupteur	Kill switch						1	1	1		1
11	S-67-04-021	Enveloppe à gaz ass.	Throttle cable ass'y						1	1	1		1
12	S-67-04-002	Enveloppe	Case						1	1	1		1
13	S-67-04-011	Cable	Wire						1	1	1		1
-	S-67-04-007	Enveloppe à gaz ass. MIKUNI	Throttle cable ass'y										1
14	S-00-19-052	Cable à frein ass.	Brake cable ass'y						1	1	1		
15	S-00-19-057	Enveloppe	Case						1	1	1		
16	S-00-19-054	Cable	Wire						1	1	1		
	S-07-04-045	Tige guidon	Steering rod						1	1	1		
	S-07-04-047	Tige guidon	Steering rod										1
17	S-07-04-048	Support tige guidon	Steering rod support										1
18	S-00-01-029	Boulon tige guidon	Bolt						2	2	2		2
19	S-00-03-002	Ecrou tige guidon	Nut						2	2	2		2
20	S-07-03-053	Joint d'accouplement	Tie rod						2	2	2		
-	S-07-04-009	Joint d'accouplement	Tie rod										2
21	S-00-19-010	Joint pivot	Tie rod end						1	1	1		
-	S-00-19-070	Joint pivot	Tie rod end										1
22	S-00-03-012	Ecrou	Jam nut						4	4	4		4
23	S-00-01-012	Boulon	Bolt						2	2	2		2
24	S-00-03-005	Ecrou	Nut						2	2	2		2
25	S-67-04-010	Bras de conduite droit	Steering arm						1	1	1		
-	S-67-04-001	Bras de conduite gauche	Steering arm						1	1	1		
-	S-67-04-016	Bras de conduite droit	Steering arm										1
-	S-67-04-015	Bras de conduite gauche	Steering arm										1
26	S-00-01-029	Boulon	Bolt						2	2	2		
27	S-00-03-002	Ecrou	Nut						2	2	2		
28	S-00-01-012	Boulon	Bolt										2
29	S-00-03-005	Ecrou	Nut										2
30	S-00-10-001	Coussinet bronze	Oilite bushing						4	4	4		
-	S-00-10-005	Coussinet bronze	Oilite bushing										4
31	S-07-04-069	Jambe de ski gauche	Ski leg L.H.						1	1	1		
-	S-07-04-068	Jambe de ski droit	Ski leg R.H.						1	1	1		
-	S-07-04-081	Jambe de ski gauche	Ski leg L.H.										1
-	S-07-04-082	Jambe de ski droit	Ski leg R.H.										1
32	S-02-01-002	Harnais	Spring coupler						2	2	2		
-	S-02-04-052	Harnais	Spring coupler										2
33	S-00-01-013	Boulon	Bolt						2	2	2		2
34	S-00-03-005	Ecrou	Nut						2	2	2		2
35	S-62-01-003	Lame secondaire	Spring leaf						2	2	2		
36	S-62-01-002	Lame intermédiaire	Spring leaf						2	2	2		
37	S-62-01-001	Lame principale	Spring leaf						2	2	2		
38	S-02-02-003	Amortisseur caoutchouc	Rubber shock absorber						2	2	2		
39	S-02-02-004	Plaque amortisseur	Shock absorber plate						2	2	2		
40	S-00-01-012	Boulon	Bolt						2	2	2		2
41	S-00-03-005	Ecrou	Nut						2	2	2		2



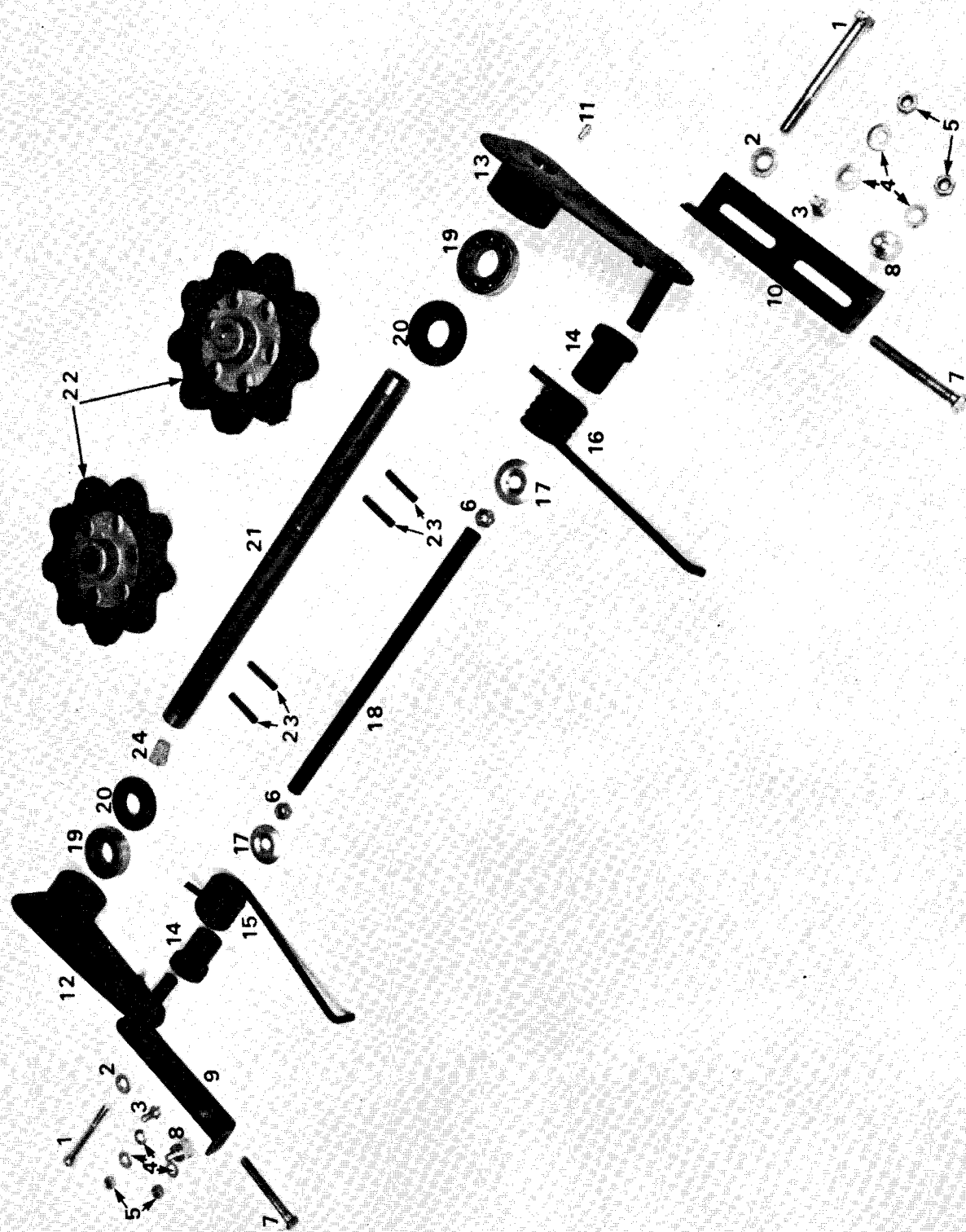
1974

NO. ILLUSTRATION	BOA-SKI	CONDUITE		STEERING		MK 230	MK-1 292T	MK-1 295	MK-11 292t	MK-11 340T	MK-11 440T	S/S 340T	S/S 440T
		DESCRIPTION											
37	S-62-03-002	Lame principale	Spring leaf									2	2
36	S-62-03-004	Lame intermédiaire	Spring leaf									2	2
35	S-62-04-003	Lame secondaire	Spring leaf									2	2
42	S-02-04-030	Glissière nylon	Nylon slide									2	2
-	S-02-03-030	Glissière nylon	Nylon slide						2	2	2		
43	S-00-01-074	Boulon	Bolt						2	2	2	2	2
44	S-00-03-024	Ecrou	Nut						2	2	2	2	2
45	S-62-01-004	Goupille	Roll pin						2	2	2	2	2
46	S-00-06-002	"Cotter pin"	Cotter pin						2	2	2	2	2
47	S-02-04-027	Patin	Ski						2	2	2		
-	S-02-04-029	Patin	Ski									2	2
48	S-02-04-035	Patin ass. droit	Ski ass'y R.H.						1	1	1		
-	S-02-04-039	Patin ass. droit	Ski ass'y R.H.									1	1
-	S-02-04-036	Patin ass. gauche	Ski ass'y L.H.						1	1	1		
-	S-02-04-040	Patin ass. gauche	Ski ass'y L.H.									1	1
49	S-02-02-006	Lame d'usure	Ski runner						1	1	1		
-	S-02-04-002	Lame d'usure	Ski runner									1	1
50	S-00-03-008	Ecrou	Nut						2	2	2	2	2



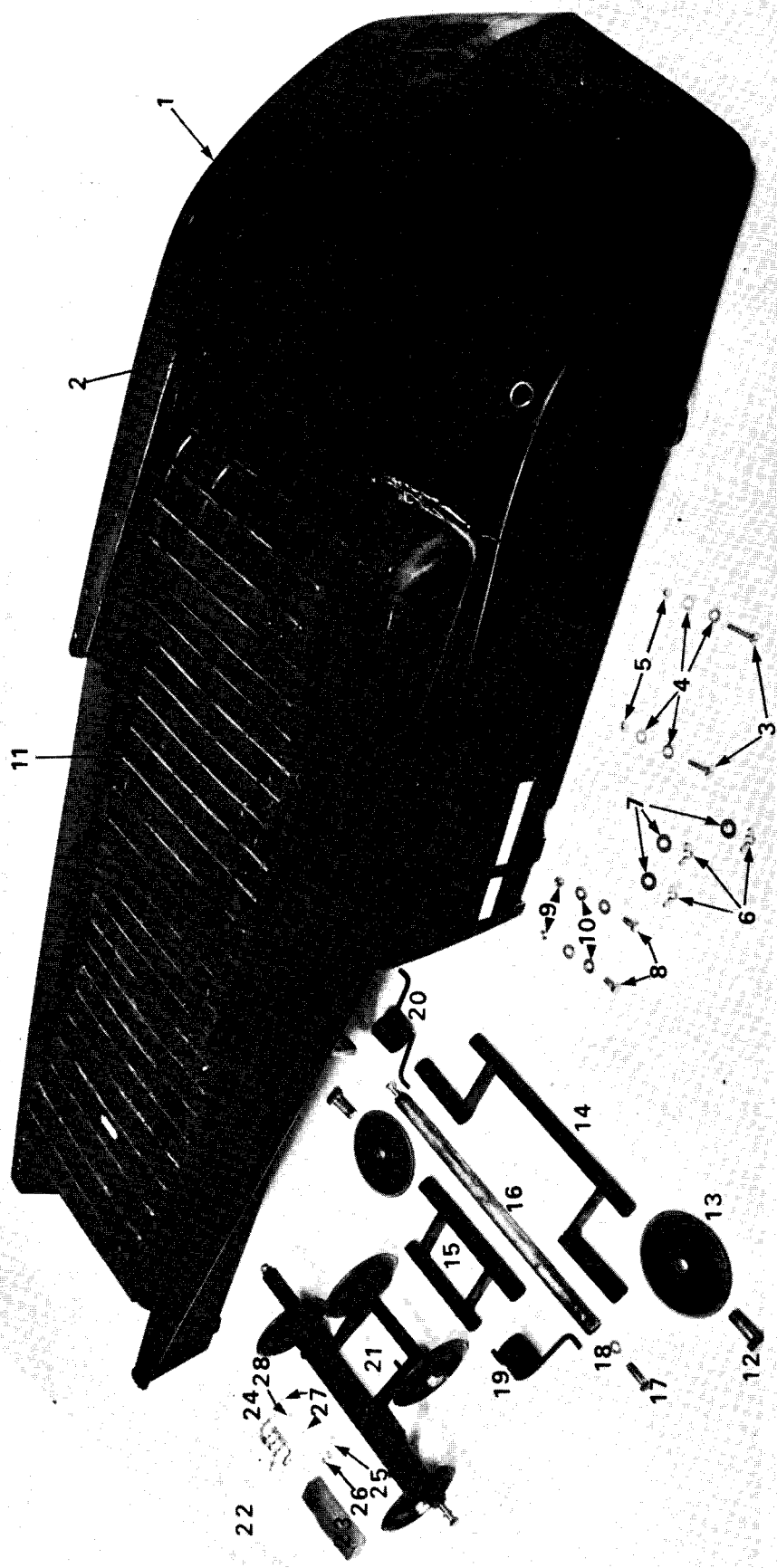
No illustration	BOA-SKI	ESSIEU AVANT	FRONT AXLE	DESCRIPTION	MK 290	MK I 292T	MK I 295	MK II 292T	MK II 340T	MK II 440T	S/S 340T	S/S 440T
1	S-73-01-001			Cable indicateur de vitesse ass. Speedometer cable ass'y		1	1					
-	S-13-03-121			Cable indicateur de vitesse ass. Speedometer cable ass'y					1	1		
2	S-73-01-033			Enveloppe " " ".....Cable housing		1	1					
-	S-13-03-120			Enveloppe " " " Cable housing					1	1		
3	S-73-01-034			Cable indicateur de vitesse Cable wire		1	1					
-	S-13-03-119			Cable indicateur de vitesseCable wire					1	1		
4	S-73-01-002			Adapteur 90' Angle drive		1	1					
-	S-73-04-002			Adapteur 90' Angle drive					1	1		
5	S-04-04-010			Couvercle coussinet ass.....Bearing housing	1							
-	S-04-04-008			Couvercle coussinet ass. Bearing housing		1	1		1	1		
6	S-00-01-010			Boulon 1/4" - 28 x 1/2" Hex. bolt 1/4" - 28 x 1/2"	4	4	4	4	4	4		
7	S-00-03-004			Ecrou nylon 1/4" - 28Nylon lock nut 1/4" - 28	4	4	4	4	4	4		
-	S-00-12-016			Rondelle 1/4" I.D. Washer 1/4" I.D.	4	4	4	4	4	4		
8	S-00-04-002			Graisseur Grease fitting	1	1	1	1	1	1		
9	S-00-08-002			Roulement à billes(1RS).....Bearing	2	2	2	2	2	2		
10	S-04-01-019			Joint d'étanchéité Oil seal	2	2	2	2	2	2		
11	S-00-06-001			Goupille de tension 1/4" x 1 1/2" Roll pin 1/4" x 1 1/2"	4	4	4	4	4	4		
12	S-04-04-003			Essieu seulShaft	1							
-	S-04-02-006			Essieu seul Shaft		1	1		1	1		
	S-04-04-001			Essieu ass. Shaft ass'y	1							
	S-04-03-030			Essieu ass.....Shaft ass'y		1	1		1	1		
13	S-00-15-002			Adapteur de cable Cable adaptor		1	1		1	1		
14	S-04-03-047			Joint adapteur de cable Cable joint		1	1		1	1		
15	S-00-19-002			Bouchon liègeplug	1							
-	S-00-19-051			Bouchon liège Plug		1	1		1	1		
16	S-64-04-004			Engrenage de plastic Plastic drive sprocket	2							
-	S-04-01-036			Engrenage de plasticPlastic drive sprocket		2	2		2	2		
17	S-69-04-002			Roue d'engrenage C-16 Double drive sprocket C-16								
-	S-69-04-003			Roue d'engrenage C-15 Double drive sprocket C-15								
-	S-69-01-026			Roue d'engrenage 35 dentsDouble drive sprocket 35 th...								
-	S-69-01-015			Roue d'engrenage 36 dents Double drive sprocket 36 th.								
-	S-69-01-027			Roue d'engrenage 37 dents Double drive sprocket 37 th.								
-	S-69-01-013			Roue d'engrenage 38 dentsDouble drive sprocket 38 th...								

04-01-026



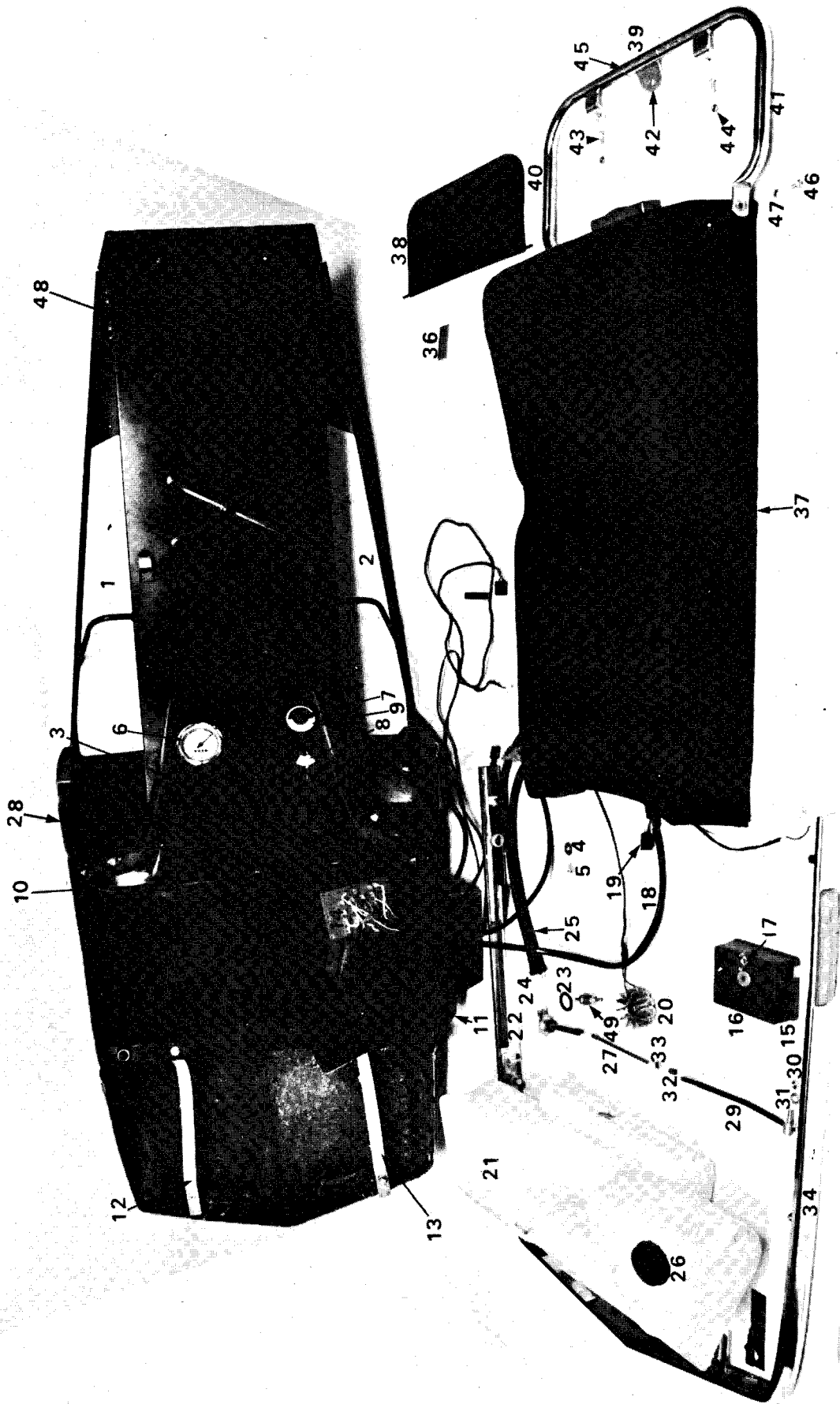
1974

No. Illustration	BOA-SKI	ESSIEU ARRIERE REAR AXLE		MK 230	MK I 292T MK I 295	MK II 292T MK II 340T MK II 440T	S/S 340T S/S 440T
		DESCRIPTION					
1	S-00-01-081	Boulon 3/8" - 16 x 3 1/2"	Hex. bolt 3/8" - 16 x 3 1/2"	2	2 2	2 2 2	
2	S-00-12-003	Rondelle 3/8" I.D.	Flat washer 3/8" I.D.	2	2 2	2 2 2	
3	S-00-01-007	Boulon 5/16" - 24 x 3/4"	Bolt 5/16" - 24 x 3/4".....	2	2 2	2 2 2	
4	S-00-12-002	Rondelle 5/16"	Flat washer 5/16"	6	6 6	6 6 6	
5	S-00-03-002	Ecrou 5/16" - 24	Nylon lock nut 5/16" - 24	4	4 4	4 4 4	
6	S-00-03-012	Ecrou 3/8" - 16	Jam nut 3/8" - 16	2	2 2	2 2 2	
7	S-00-01-008	Boulon 5/16" - 24 x 3"	Bolt 5/16" - 24 x 3"	2	2 2	2 2 2	
8	S-64-01-001	Boulon d'ajustement	Adjusting bolt	2	2 2	2 2 2	
9	S-04-02-002	Angle d'ajustement droit	Angle R.H.....	1	1 1	1 1 1	
10	S-04-02-001	Angle d'ajustement gauche	Angle L.H.	1	1 1	1 1 1	
11	S-00-04-001	Graisseur (press fit)	Grease fitting	2	2 2	2 2 2	
12	S-04-03-038	Plaque d'articulation droite	Link plate R.H.....		1 1	1 1 1	
13	S-04-03-039	Plaque d'articulation gauche	Link plate L.H.		1 1	1 1 1	
12	S-04-03-037	Plaque d'articulation droite	Link plate R.H.	1			
13	S-04-03-041	Plaque d'articulation gauche	Link plate L.H.....	1			
14	S-04-01-012	Coussinet caoutchouc	Rubber bushing	2	2 2	2 2 2	
15	S-64-01-002	Ressort d'articulation droit	Link spring R.H.	1	1 1	1 1 1	
16	S-64-01-003	Ressort d'articulation gauche	Link spring L.H.....	1	1 1	1 1 1	
17	S-04-01-011	Rondelle d'arrêt	Forming washer	2	2 2	2 2 2	
18	S-04-04-045	Tige renfort	Reinforcement shaft	1			
-	S-04-03-045	Tige renfort	Reinforcement shaft		1 1	1 1 1	
19	S-00-08-002	Coussinet à billes	Bearing	2	2 2	2 2 2	
20	S-04-01-019	Joint d'étanchéité	Oil seal	2	2 2	2 2 2	
21	S-04-04-004	Essieu seul	Shaft	1			
-	S-04-01-004	Essieu seul	Shaft		1 1	1 1 1	
22	69-401	Engrenage de caoutchouc	Rubber sprocket	2			
-	S-04-04-022	Engrenage de caoutchouc	Rubber sprocket		2 2	2 2 2	
23	S-00-06-001	Goupille à pression 1/2" x 1 1/2"	Roll pin 1/2" x 1 1/2"	4	4 4	4 4 4	
24	S-00-19-002	Bouchon de liège	Plug	2	2 2	2 2 2	
	S-04-04-002	Essieu ass.....	Shaft ass'y	1			
	S-04-03-035	Essieu ass.	Shaft ass'y		1 1	1 1 1	



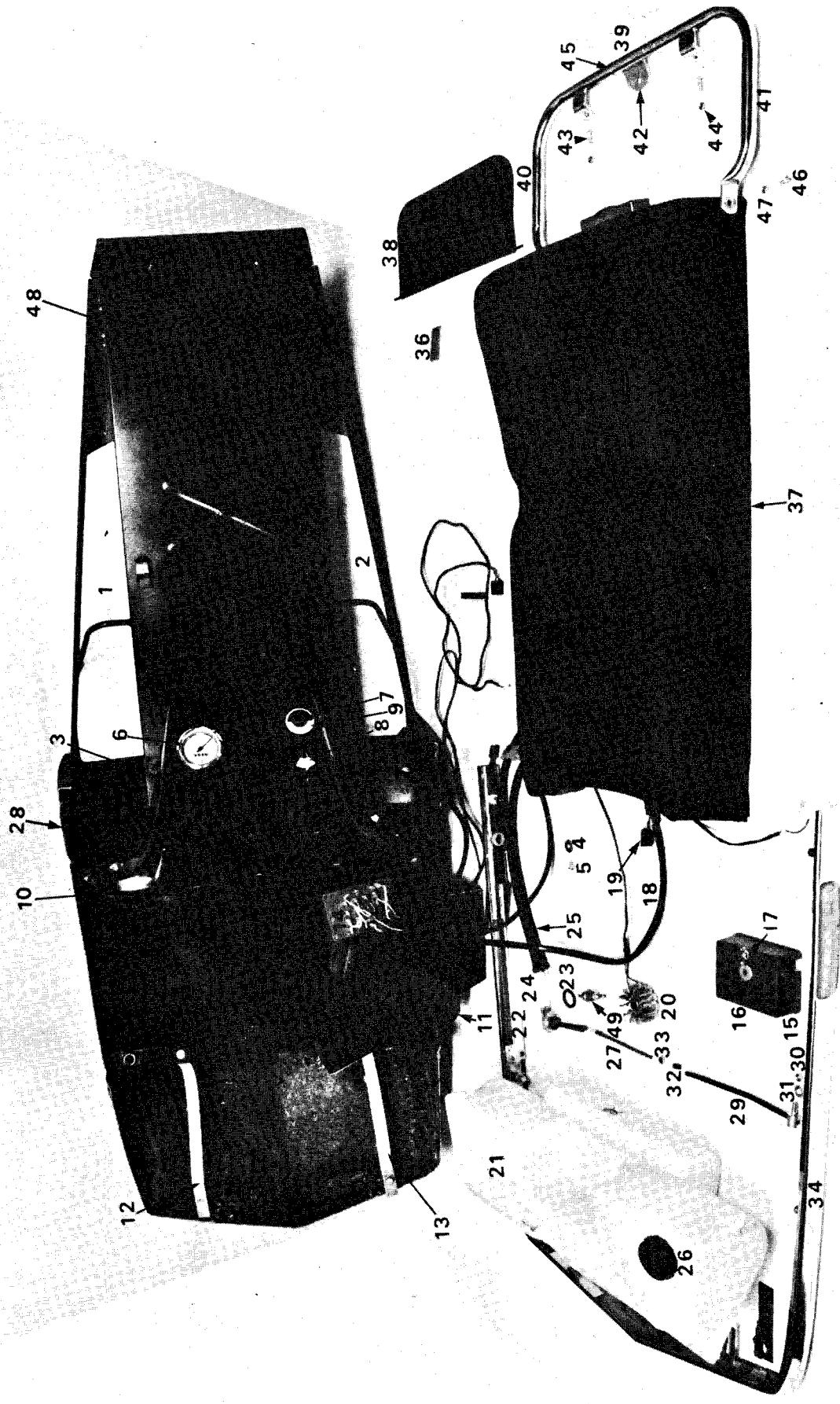
1974

No illustration	BOA-SKI	CHASSIS		BODY		MK 230	MK I 292T	MK I 295	MK II 292T	MK II 340T	MK II 440T	S/S 340T	S/S 440T
		DESCRIPTION											
1	S-61-04-001		Partie inférieure		Bottom plate	1							
-	S-61-04-002		Partie inférieure		Bottom plate		1	1					
-	S-61-04-003		Partie inférieure		Bottom plate				1	1	1		
2	S-00-02-012		Rivet a1. 3/16" x 3/4"		Pop rivet 3/16" x 3/4"	6	6	6	6	6	6		
-	S-00-12-005		Rondelle 3/16" I.D.		Washer 3/16" I.D.	6	6	6	6	6	6		
3	S-00-01-089		Boulon 1/4" x 1"		Bolt 1/4" x 1"	4	4	4	4	4	4		
4	S-00-12-004		Rondelle 1/4" I.D.		Washer 1/4" I.D.	4	4	4	4	4	4		
5	S-00-03-004		Ecrou 1/4" N.F.		Nut 1/4" N.F.	4	4	4	4	4	4		
6	S-00-03-027		"Wing nut" (garde-clutch).....		Wing nut	3	3	3	3	3	3		
7	S-00-12-002		Rondelle		Washer	3	3	3	3	3	3		
8	S-00-01-004		Boulon (support conduite)		Bolt	4	4	4	4	4	4		
9	S-00-03-002		Ecrou (support conduite).....		Nut	4	4	4	4	4	4		
10	S-00-12-004		Rondelle		Washer	4	4	4	4	4	4		
11	S-03-01-045		Chenille		Track	1							
-	S-03-04-003		Chenille		Track		1	1					
-	S-03-04-001		Chenille		Track				1	1	1		
12	S-00-01-006		Boulon roue de train		Bolt	12	12	12	12	12	12		
13	S-00-19-041		Roue		Boggey wheel	12	12	12	12	12	12		
14	S-05-01-024		Support ext.		External support	3							
-	S-05-04-008		Support ext.		External support		3	3	3	3	3		
15	S-05-04-005		Support int.....		Internal support	3	3	3	3	3	3		
16	S-05-01-023		Pivot de train		Aluminium shaft	3							
-	S-05-01-009		Pivot de train		Aluminium shaft		3	3	3	3	3		
17	S-00-01-005		Boulon pivot de train		Bolt	6	6	6	6	6	6		
18	S-00-12-001		Rondelle		Lock washer	6	6	6	6	6	6		
19	S-65-01-002		Ressort gauche		Spring torsion L.H.	3	3	3	3	3	3		
20	S-65-01-001		Ressort droit		Spring torsion R.H.....	3	3	3	3	3	3		
21	S-05-04-020		Train complet ass.		Suspension ass'y	3							
-	S-05-01-011		Train complet ass.		Suspension ass'y		3	3	3	3	3		
22	S-00-13-102		Feu de position		Tail light ass'y	1	1	1					
23	S-00-13-103		Réfecteur		Lens	1	1	1					
24	S-00-13-104		"Housing"		Housing	1	1	1					
25	S-00-07-005		Boulon		Bolt	2	2	2					
26	S-00-03-023		Ecrou		Nut	2	2	2					
27	S-00-13-056		Ampoule (194 positions)		Bulb	2	2	2					
28	S-00-13-097		Ampoule (161 stop).....		Bulb	1	1	1					



1974

No ILLUSTRATION	BOA-SKI	CHASSIS		BODY		MK 230	MK I 292T	MK I 295	MK II 292T	MK II 340T	MK II 440T	S/S 340T	S/S 440T
		DESCRIPTION											
1	S-73-04-013		Tapis marche-pied droit	Foot pad R.H.		1							
2	S-73-04-012		Tapis marche-pied gauche	Foot pad L.H.		1							
1	S-73-04-015		Tapis marche-pied droit	Foot pad R.H.....				1	1				
2	S-73-04-014		Tapis marche-pied gauche	Foot pad L.H.				1	1				
3	S-73-04-062		Couvre-moteur	Engine cover		1							
-	S-73-04-063		Couvre-moteur	Engine cover				1					
-	S-73-04-064		Couvre-moteur	Engine cover					1				
	S-00-19-066		Ecrou couvre-moteur	Knob engine cover		1							
	S-13-03-131		Douille caoutchouc	Rubber grommet		1			1	1			
4	S-00-12-004		Rondelle	Washer		1			2	2			
5	S-00-01-016		Boulon attache couvre-moteur	Bolt					2	2			
6	S-00-14-008		Indicateur de vitesse	Speedometer					1	1			
7	S-00-13-004		Interrupteur à clef	Ignition switch		1			1	1			
8	S-73-04-032		Décalque étrangleur	Choke decal		1			1	1			
9	S-73-04-020		Décalque interrupteur	Ignition switch decal		1			1	1			
10	S-73-04-083		Contour couvre-moteur	Engine cover trim					1	1			
11	S-69-04-004		Couvercle embrayage	Clutch cover		1				1			
-	S-69-04-005		Couvercle embrayage	Clutch cover					1				
12	S-01-03-133		Support al. droit	Al. Support R.H.		1							
-	S-01-03-131		Support al. droit	Al. Support R.H.					1	1			
13	S-01-03-134		Support al. gauche	Al. Support L.H.....		1							
-	S-01-03-132		Support al. gauche	Al. Support L.H.					1	1			
14	S-07-03-082		Plaque boîte distributrice	Plate electrical box					1	1			
15	S-07-03-070		Couvercle boîte distributrice	Cover electrical box					1	1			
16	S-00-12-002		Rondelle	Washer					1	1			
17	S-00-03-027		Ecrou	Wing nut					1	1			
18	S-75-04-001		Harnais électrique	Electrical harness		1							
-	S-75-04-005		Harnais électrique	Electrical harness					1				
-	S-75-04-002		Harnais électrique	Electrical harness					1		1	1	1
19	S-75-04-006		Harnais électrique siège	Seat electrical harness		1			1	1			
20	S-00-13-093		"Zener diode"	Zener diode		1			1				
-	S-00-13-094		"Zener diode"	Zener diode					1		1	1	1
21	S-10-03-031		Réservoir à essence	Gas tank		1							
-	S-10-03-032		Réservoir à essence	Gas tank					1	1		1	1
22	S-10-03-034		Adaptateur réservoir	Adaptor		1			1				
-	S-10-03-035		Adaptateur réservoir	Adaptor					1		1	1	1
23	S-10-03-043		Joint d'étanchéité	Gasket		1			1	1		1	1
24	S-10-03-040		Conduit d'essence	Gas line		1			2	1		2	2
25	S-10-03-044		Protecteur ligne à essence	Gas line protector		1			2	1		2	2
26	S-00-19-055		Bouchon réservoir	Fuel tank cap		1			1	1		1	1
27	S-10-03-038		Tube dans réservoir	Vinyl tube		1			1	1		1	1
-	S-10-03-039		Tube dans réservoir	Copper tube					1	1		1	1
28	S-07-04-073		Support de conduite	Steering support		1							
-	S-07-04-060		Support de conduite	Steering support					1	1			
29	S-06-02-001		Tige frein (chain case)	Chain case rode					1	1		1	1
30	S-00-03-002		Ecrou	Nut					1	1		1	1
31	S-00-12-002		Rondelle	Washer					1	1		1	1
32	S-06-04-001		Douille	Spacer					1			1	1
33	S-00-03-002		Ecrou	Nut					1	1		1	1
34	S-14-03-051		Pare-choc avant	Front bumper		1							
-	S-14-03-035		Pare-choc avant	Front bumper					1	1			
-	S-00-01-004		Boulon	Bolt		4			4	4			
-	S-00-03-002		Ecrou	Nut		4			4	4			
-	S-00-12-002		Rondelle	Washer		4			4	4			
35	S-00-13-060		Réfecteur	Yellow reflector		2							
36	S-00-13-028		Réfecteur	Red reflector		2							
37	S-71-04-030		Siège	Seat		1							



1974

No ILLUSTRATION	BOA-SKI	CHASSIS	BODY	MK 230	MK I 292T	MK I 295	MK II 292T	MK II 240T	MK II 440T	S/S 340T	S/S 440T
-	S-71-04-031	Siège	Seat		1	1					
-	S-00-01-090	Boulon	Bolt	2	2	2					
38	S-01-01-149	Garde-neige	Snow flap	1							
-	S-01-04-099	Garde-neige	Snow flap		1	1	1	1	1		
39	S-14-04-059	Pare-choc arrière ass.	Rear bumper ass'y	1							
-	S-14-04-060	Pare-choc arrière ass.	Rear bumper ass'y		1	1	1	1	1		
40	S-14-04-051	Pare-choc arrière droit	Rear bumper R.H.	1							
-	S-14-04-053	Pare-choc arrière droit	Rear bumper R.H.		1	1	1	1	1		
41	S-14-04-052	Pare-choc arrière gauche	Rear bumper L.H.	1							
-	S-14-04-054	Pare-choc arrière gauche	Rear bumper L.H.		1	1	1	1	1		
42	S-14-01-051	Attache carriole	Bumper hitch	1	1	1	1	1	1		
43	S-00-01-014	Boulon 1/4" - 20 x 3/4"	Bolt 1/4" - 20 x 3/4"	2	2	2	2	2	2		
44	S-00-03-007	Ecrou 1/4" - 20	Nut 1/4" - 20	2	2	2	2	2	2		
45	S-00-02-003	Rivet 3/16" x 1 1/8"	Rivet 3/16" x 1 1/8"	2	2	2	2	2	2		
46	S-00-01-016	Boulon 1/4" - 20 x 1/2"	Bolt 1/4" - 20 x 1/2"	2	2	2	2	2	2		
47	S-00-03-007	Ecrou 1/4" - 20	Nut 1/4" - 20	2	2	2	2	2	2		
48	S-01-04-189	Chassis ass.	Body ass'y	1							
-	S-01-04-190	Chassis ass.	Body ass'y		1						
-	S-01-04-191	Chassis ass.	Body ass'y			1					
49	S-00-19-084	Filtre à essence	Gas filter	1	1	1	1	1	1		

LORSQUE VOUS COMMANDEZ DES PIÈCES DE RECHANGE, VEUILLEZ TOUJOURS INDIQUER:

1. Le numéro de la pièce indiqué dans cette liste.
2. La description de la pièce.
3. Le numéro de modèle au complet.

IMPORTANT

Cette liste de pièces de rechange possède une valeur réelle, car elle vous permet de vous procurer à tout moment les pièces de rechange appropriées. Aussi, nous vous conseillons-nous de la conserver en lieu sûr, avec vos papiers importants.

Pour obtenir ces pièces, prière de vous adresser à votre distributeur.

WHEN ORDERING REPAIR PARTS ALWAYS GIVE THE FOLLOWING INFORMATION:

1. The Part Number in the list.
2. The Description in the list.
3. The complete Model Number.

IMPORTANT

This list is valuable. It will assure your being able to obtain proper service parts at any time. We suggest you keep it with other valuable papers.

Please order these parts from your local distributor.