

BOA-SKI

*man's best
friend
in the snow*



by Alsport

BOA-SKI





***Ruggedly handsome;
steadfastly
dependable***

Basics of the breed.

BOA-SKI SS

The ultimate in high-performance snowmobiles. Boa-Ski SS gives you advance-design front engine snowmobiling, with a choice of two great Kohler engines; 340 cc and 440 cc twins. Aluminum chassis for lighter total weight. Easy Rider II™ slider suspension. Speedometer and tachometer, plus head-temperature gauges for each bank. Safety padded handle bars, and energy absorbing, molded front bumper. Pop-up headlamp and wrap-around tail lamps. You can't find a better friend in the snow. Or a better performing one.



BOA-SKI MARK I

Looking for lots of snowmobile on a limited budget? Then look at this one. Available with either a Kohler 292 cc twin or a JLO 295 cc single-cylinder engine, the Mark I will give you plenty of snowmobiling thrills. All new Boa-Ski accent styling, beefier seat, and strong wrap-around front bumper. Bogie suspension, 15½" track for added riding comfort. You can pay more, but you can't get more on a tight budget. So make friends with Boa-Ski Mark I.



BOA-SKI MARK II

Completely restyled from its energy-absorbing molded front bumper to its wrap-around tail-lamp, Boa-Ski Mark II surely is the best looking snowmobile built anywhere. And it's available with a choice of three great Kohler engines; 292 cc, 340 cc and 440 cc twins. Safety-padded handlebar, speedometer and tachometer standard equipment. Bogie suspension for smooth riding. Mitt-grip starter-pull for operator convenience. And Boa-Ski's vivid, contemporary good looks announces you as having chosen snowmobiling's style leader.



BOA-SKI MARK 230

Here's our little nifty. A three-quarter size regulation snowmobile. Not a toy (like some) but a scaled-down version of the great Boa-Ski snowmobile. Perfect for youngsters. Lots of gals love 'em too. Powered by a peppy JLO 230 cc single cylinder engine, complete with engine cover this year. Sturdy leaf-spring suspension up front; bogie wheels in the rear. Wrap-around front bumper, new improved seat. A splendid second or third sled for family fun.



Here's why BOA-SKI is the snowmobile you can depend on.



A super smooth ride and positive steering is assured by Boa-Ski's combination leaf spring and shock dual front suspension system on SS and Mark II models. Mark I and Mark 230 models feature cushion-flex spring front suspensions, perfectly suited for lighter duty snowmobiles.

New for '74, full mitt-grip starter pull for Boa-Ski SS and Mark II models. Choose standard recoil starting system or optional electric start on SS, Mark II and Mark I 292. Engines on these models pre-wired for electric start should you choose to convert later.

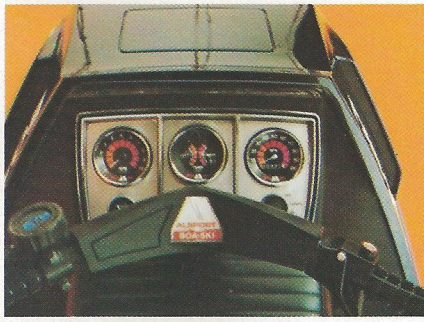
Boa-Ski SS owners will love this pop-up headlamp. When day riding, the lamp is completely sealed in the front cowl, preserving the smooth contemporary lines of this performance leader. At night, the lamp quickly and conveniently pops up to light your way along track and trail. All new Boa-Ski models feature lighting systems which fully comply with new headlamp height and light penetration regulations.



Ride in style and comfort in official Alsport snowmobile clothing.

Snowmobiling is a lot more fun when you're dressed for it. Warmly and stylishly. Pictured here are just a few of the many handsome snowmobile ensembles available from Boa-Ski. One-piece and two-piece suits for men and women. Light-weight, and snug-as-a-bug-in-a-rug warm. Many trimmed in the exciting accent colors featured on your Boa-Ski snowmobile. Color coordinated gloves, mittens, boots, and helmets. Plus a line of apres-ski under garments, which permit you to relax in style and comfort after your day of snowmobiling thrills. Your Boa-Ski dealer has complete details and prices. Ask him, then dress the part as an owner of Boa-Ski, man's best friend in the snow.





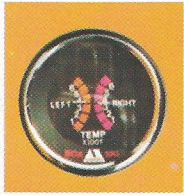
Right in step with automotive high styling is the new instrument panel on Boa-Ski SS and Mark II models. Easy-to-read calibration on all dials, and a high luster appearance will add to your snowmobiling pleasure. Temperature gauge is available only on SS models. Note, too, the safety padded handle bar. It looks great, and protects you, too.



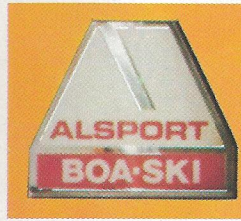
Boa-Ski's new wrap-around lamp assembly — stylish — functional. It's highly visible and attractive. Available as standard equipment on SS and Mark II. All other Boa-Ski models feature a single rear stop light and tail light. All accent striping on all models is 3-M™ reflective material to make your Boa-Ski snowmobile highly visible and easily recognizable night or day. New Alsport/Boa-Ski snow flap is standard equipment on all models.



SS performance riders will appreciate the added control provided by this Kelsey-Hays hydraulic disc brake system. A gentle squeeze is all it takes to bring this booming super-sled to a smooth, safe, controlled stop. All other Boa-Ski models feature an easily-actuated mechanical disc brake, engineered for sure stopping at all speeds. All Boa-Ski models come with thumb throttles for easy acceleration and smooth, fatigue-free cruising.



As an added benefit for performance riders, the Boa-Ski SS comes with an engine-head temperature gauge as standard equipment. This instrument is calibrated to measure the thermal output of each cylinder head individually, and the face of the gauge is color coded for at-a-glance reading. Available on SS models only.



Look for this symbol when you purchase your next snowmobile. It stands for Alsport, Incorporated, makers of Boa-Ski snowmobiles, the quality leader. Builders of fun-filled year-round Tri-Sport three-wheelers. And, manufacturers of Alsport-Steen 100cc and 80cc sportcycles for both street and off-road cycling excitement. Alsport, No. 1 in recreational vehicles for the whole family with dealers across the length and breadth of the U.S. and Canada.



BOA-SKI Snowmobile Specifications

MODEL	SS-440	SS-340	MARK II-440	MARK II-340	MARK II-292	MARK I-292	MARK I-295	MARK-230
Engine/Position	Kohler/front	Kohler/front	Kohler/mid	Kohler/mid	Kohler/mid	Kohler/mid	JLO/mid	JLO/mid
#Cylinders/displacement	2-436	2-338	2-436	2-338	2-292	2-292	1-295	1-230
Ignition/cooling	CD/Axial	CD/Axial	CD/Axial	Points/Axial	Points/Fan	Points/Fan	Points/Fan	Points/Fan
Carburetor	2 Mikune HD	2 Mikune HD	1 Walbro HD	1 Walbro HD	1 Walbro HR	1 Walbro HR	1 Tillotson HR	1 Tillotson HR
Matched clutch & Conv.	Comet	Comet	Boa-Ski	Boa-Ski	Boa-Ski	Boa-Ski	Boa-Ski	Boa-Ski
Chain Drive	Double #35	Double #35	Double #35	Double #35	Double #35	Double #35	Double #35	Double #35
Gear Ratio	18-36	17-36	18-36	17-36	16-38	16-38	17-38	15-38
Drive Sprocket	Polyurethane	Polyurethane	Polyurethane	Polyurethane	Polyurethane	Polyurethane	Polyurethane	Polyurethane
Track	15½" cleated	15½" cleated	15½" rubber	15½" rubber	15½" rubber	15½" rubber	15½" rubber	14" rubber
Suspension/Front	shock/spring	shock/spring	shock/spring	shock/2 spring	shock/2 spring	3 leaf spring	2 leaf spring	2 leaf spring
Suspension/Rear	Easy Rider II Slide™	Easy Rider II Slide™	Bogie	Bogie	Bogie	Bogie	Bogie	Bogie
Brake System	Hydraulic Disc	Hydraulic Disc	Mech. Disc	Mech. Disc	Mech. Disc	Mech. Disc	Mech. Disc	Mech. Disc
Fuel Tank Capacity	6 Gal. US	6 Gal. US	5 Gal. US	5 Gal. US	5 Gal. US	5 Gal. US	5 Gal. US	4.5 Gal. US
Pre-wired for electric Start	Yes	Yes	Yes	Yes	Yes	Yes	n/a	n/a
Tool Storage	Yes	Yes	Yes	Yes	Yes	Yes	Yes	Yes
Passenger Belt Grip	Yes	Yes	Yes	Yes	Yes	Yes	Yes	Yes
Hinged Cowl	Yes	Yes	Yes	Yes	Yes	Yes	Yes	Yes
Electric Output	120 Watts	120 Watts	120 Watts	120 Watts	120 Watts	120 Watts	75 Watts	75 Watts
Hi-Lo Head Lamps	Yes	Yes	Yes	Yes	Yes	Yes	Yes	Yes
Stoplight	Wrap-around	Wrap-around	Wrap-around	Wrap-around	Wrap-around	1	1	1
Speedometer	Standard	Standard	Standard	Standard	Standard	Standard	Standard	n/a
Tachometer	Standard	Standard	Standard	Standard	Standard	n/a	n/a	n/a
Cylinder Head Temp. Gauges	Standard	Standard	n/a	n/a	n/a	n/a	n/a	n/a
Snow Flap	Standard	Standard	Standard	Standard	Standard	Standard	Standard	Standard
Overall Length	96"	96"	96"	96"	96"	96"	96"	86"
Overall Width	32"	32"	32"	32"	32"	32"	32"	28"
Height	33"	33"	37"	37"	37"	37"	38"/32"	36"/31"
Dry Weight	330 lbs.	325 lbs.	340 lbs.	335 lbs.	330 lbs.	305 lbs.	295 lbs.	265 lbs.

Alsport, Inc. reserves the right to change, eliminate or otherwise alter models, specifications, optional equipment, features, and prices without prior notice.

Alsport Inc.

84 Whittlesey • Norwalk, Ohio 44857

BOA-SKI by Alsport ... man's best friend in the snow

