

Tri-Sport[®]

74



Tri-Sport[®] '74

...IT HAD TO HAPPEN!

Alsport proudly announces its 1974 three wheel TRI-SPORT line of dependability. From the totally exciting — and practical — Street Legal* TRI-SPORT...right down through to the Mini MTS 30. And a custom Phase III Racer at the top end of the impatient racing machines. New for '74...all TRI-SPORT vehicles are equipped with Magura Twist Throttle Grips, and a two-position On/Off engine switch. A complete line of machines to fit all budget, power, pleasure, and work requirements.

MTS 30

A new look for '74 in the long-time favorite Mini for youngsters. But not to be overlooked as the right machine for smaller adults. An Alsport sales leader. The MTS 30 is powered by a 3 HP Tecumseh engine, and made of extra heavy tubular steel for youngster-rugged construction. Mini Roll Cage and Seat Pad shown are available accessory items.

TS 110 and TS 101

Two new economy TRI-SPORT three wheelers. The 5 HP TS 110 and the 14 HP TS 101. Both are full size and of lightweight construction. New this year for those who need a larger and/or faster machine, but still in a lower price range. Both have an aircraft type tubular steel frame and solid axles... and the TS 101 is powered by a McCulloch engine. Seat Pad is standard equipment on both machines, and Directional Brakes are standard on the TS 101. Roll Bar with Head Rest shown is an available accessory item.



MTS 30



TS 110

TS 101



TS 130

The 8 HP Knobby Tire TRI-SPORT Great. Newly designed for '74. A full-bodied machine with Tecumseh 4-Cycle workhorse engine. Comes with Directional Brakes and Seat Pad. Roll Cage with Head Rest, and hub caps shown are some of the many available accessory items for the TS 130. Shown also is the Alsport 2-Passenger Trailer along with the Alsport Cargo Trailer. Both new and available through Alsport. Gang Mowers, Seeders, Lawn Rollers, Dump Trailers...all can be attached to the TS 130 TRI-SPORT machine for utility pleasure use. Get on it! TRI-SPORT '74.

RTS 8

The RTS 8 comes with the work proven 8 HP Tecumseh engine, and also has total suspension on all wheels. Shocks on the rear wheels with a split axle provide a comfort riding ratio that's unbelievable. This TRI-SPORT vehicle has the same workhorse ability as the TS 130, but with a smoother ride. Fun for all... and it loves the trails.



RTS MAC

A Hot Stocker right out of the box. It's track born and a product of total engineering excellence. Fully suspended at all wheels; super on curves; and tops in stability on track or trail. The 14 HP McCulloch engine comes with Expansion Chamber. Directional Brakes and Color Coordinated Seat Pad are standard equipment as well as the full-coverage front fender. Cargo Rack with Head Rest is an available optional item.

RTS MAC sports the 14 HP super performance McCulloch engine with Expansion Chamber standard.

Magura Twist Throttle Grips on all TRI-SPORT vehicles. Note stylized Front Fender on the TS 130 for '74.

PHASE III RACER

Alsport's custom 290 or 340cc Racer of limited production. A mid-engine "springer" performing with incredible acceleration. Standard with Racing Roll Bar, Expansion Chambers, Twin Carburetors, Dual Hydraulic Disc Brakes, and Seat Pad. Light is optional.

RTS 340

RTS 340—The big stock TRI-SPORT machine. Powered by a 340cc Kohler high-performance engine delivering 28 HP. Same mid-engine placement provides the most efficient power transmission—source to wheels.

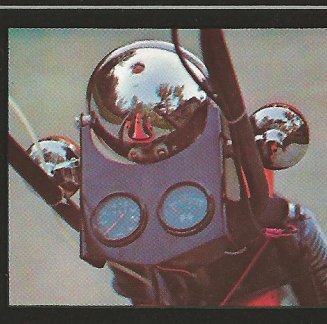
Dual Hydraulic Disc Brakes and Seat Pad are standard. Cargo Rack/Head Rest optional.

STREET LEGAL*

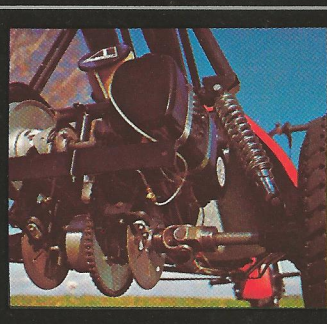
RTS SL*...IT HAD TO HAPPEN! A Street Legal* TRI-SPORT vehicle. Take a stock 290 or 340cc RTS and add: Engine Cowling and Fenders, Front/Rear Light Kit with Speedometer, Tach, Horn, Cargo Rack/Head Rest, Electric Start, Spoked Front Wheel with brake, and hub caps. The most exciting road vehicle ever—and economical. To school; to work; to the golf course. TRI-SPORT SL* for '74.



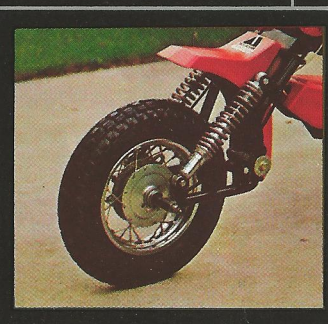
Optional Free-Flow Engine Cowling and Fenders...a part of Alsport's RTS SL* excitement this year. Also shows optional lighting.



Front light with Speedometer and Tach clustered in an attractive, viewable, mounting for the SL*.



Dual Hydraulic Disc Brakes are standard equipment on all 290 and 340cc RTS machines and Phase III Racer. Note, also, the RTS independent wheel suspension.



And the smart, eye catching, optional Spoked Front Wheel with internal expansion brake.



ALSPORT, INCORPORATED 84 Whittlesey, Norwalk, Ohio 44857

La Guadeloupe, Frontenac County, Quebec

*Street legal in most states

Printed in U.S.A.

HILSTAD DISTRIBUTORS (1961) LIMITED
 1362 BLUNDELL ROAD P.O. BOX 447
 MISSISSAUGA, ONTARIO NORTH BAY, ONTARIO
 1-416-277-1491 1-705-472-5800

1974 PRICES FOR TRI-SPORT

<u>MODEL</u>	<u>DESCRIPTION</u>	<u>SUGGESTED LIST</u>	<u>DEALER NET</u>
MTS-30	3 H.P. Mini - 4 Cycle Tecumseh.	\$ 439.95	\$ 351.96
TS-100	5 H.P. - 4 Cycle Tecumseh, c/w seat pad & knobby tires.	584.95	444.56
TS-125	7 H.P. - 4 Cycle Tecumseh, c/w seat pad & knobby tires.	719.95	547.16
RTS-8	8 H.P. - 4 Cycle Tecumseh, Split Axel with rear shocks, c/w seat pad and performance tires.	849.95	645.24
RTS-290	24 H.P. - 2 Cycle 292 c.c. Twin Kohler, split axel with rear shocks, dual hydraul- ic disc brakes, c/w seat pad and perform- ance tires.	1,199.95	919.05
RTS-340	28 H.P. - 2 Cycle 338 c.c. Twin Kohler, split axel c/w rear shocks, dual hydraul- ic disc brakes, c/w seat pad and perform- ance tires.	1,264.95	961.91
<p>The following S/L units have the federal transport seal to be licensed in Ontario and are complete with engine cowling and fenders, front rear light kit and turn signal indicators, speedometer, horn, cargo rack and head rest, electric start, spoked front wheel with brake, hydrolic parking brake and hub caps.</p>			
RTS-290 SL	24 H.P. - 2 Cycle 292 c.c. Twin Kohler.	1,629.00	1,308.19
RTS-340 SL	28 H.P. - 2 Cycle 338 c.c. Twin Kohler.	1,679.00	1,349.86
SL-414	14 H.P. - 4 Cycle Tecumseh - C.D.I. Ignition.	1,529.95	1,223.96
SL-416	16 H.P. - 4 Cycle Tecumseh - C.D.I. Ignition.	1,579.95	1,263.96

PRICES INCLUDE FEDERAL SALES TAX AND ARE SUBJECT TO CHANGE WITHOUT NOTICE.....

REVISED APRIL 22ND, 1974.

HILSTAD DISTRIBUTORS (1961) LIMITED

1362 BLUNDELL ROAD
MISSISSAUGA, ONTARIO

P.O. BOX 447
NORTH BAY, ONTARIO

1974 PRICES FOR TRI-SPORT ACCESSORIES

<u>PART NUMBER</u>	<u>DESCRIPTION</u>	<u>SUGGESTED LIST</u>	<u>DEALER NET</u>
724-100	Windshield. (All Models).	\$ 22.50	\$16.87
724-103	Alsport Tire Guage. (All Models).	10.50	7.87
724-106	Alsport Flat Proof. (All Models).	3.98 Btl.	2.98 Btl.
732-102	Mini Seat Pad. (MTS).	17.50	13.12
734-113	Hub Caps. (All Models).	10.95	8.21
739-102	Front Spoked Wheel. (RTS 290 & RTS 340).	65.95	49.46
739-103	Racing Roll Bar. (RTS 290 & RTS 340).	26.95	20.21
739-104	Exhaust Expansion Chambers. (RTS 290 & RTS 340).	96.95	72.71
739-106	Tri-Sport Ski - TS Series.	36.95	27.71
739-107	Tri-Sport Ski - RTS Series.	36.95	27.71
739-110	Fender Kit. (RTS 290 & RTS 340).	39.95	29.96
739-116	Light Kit. (RTS 8).	54.95	41.21
760-109	Wheelie Kit. (TS 100 & TS 125).	32.95	24.71
760-116	Cargo Carrier w/head rest. (TS 150 & TS 290).	39.95	29.96
760-143	Light Kit. (TS 150 & TS 290).	54.95	41.21
760-171	Roll Cage w/head rest. (All TS Models).	30.20	22.65
760-172	Cargo Carrier w/head rest. (TS 100 & TS 125).	39.95	29.96
760-173	Hitch Plate. (TS 100 & TS 125).	6.90	5.17
760-174	Wheelie Kit.-(TS 150 & TS 290).	32.95	24.71
760-175	Jr. Foot Rest. (All RTS Models).	10.97	8.22
760-176	Mini Roll Cage w/head rest. (MTS 30).	26.95	20.21
760-177	Hitch Plate. (TS 150, TS 290, RTS 290 & RTS 340).	6.90	5.17
760-195	Cargo Carrier. (RTS 8).	39.95	29.96
760-196	Head Rest. (RTS 8).	26.95	20.21
760-199	Light Kit. (RTS 290 & RTS 340).	54.95	41.21
760-237	Cargo Carrier. (RTS 290 & RTS 340).	39.95	29.96

PRICES ARE F.O.B. NORTH BAY OR TORONTO, INCLUDE FEDERAL SALES TAX AND ARE SUBJECT
TO CHANGE WITHOUT NOTICE.

REVISED FEBRUARY 5TH, 1974.